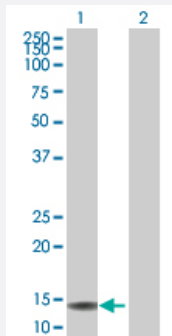


SH2D1A 293T Cell Transient Overexpression Lysate(Denatured)

Catalog # H00004068-T01

Size 100 uL

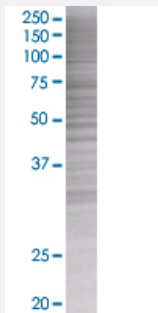
Applications



Western Blot

Lane 1: SH2D1A transfected lysate (14.2 KDa)

Lane 2: Non-transfected lysate.



SDS-PAGE Gel

SH2D1A transfected lysate.

Specification

Transfected Cell Line	293T
Plasmid	pCMV-SH2D1A full-length
Host	Human
Theoretical MW (kDa)	14.19
Interspecies Antigen Sequence	Mouse (88); Rat (89)

Quality Control Testing

Transient overexpression cell lysate was tested with Anti-SH2D1A antibody ([H00004068-B01](#)) by Western Blots.

Western Blot

Lane 1: SH2D1A transfected lysate (14.2 KDa)

Lane 2: Non-transfected lysate.

SDS-PAGE Gel

SH2D1A transfected lysate.

Storage Buffer

1X Sample Buffer (50 mM Tris-HCl, 2% SDS, 10% glycerol, 300 mM 2-mercaptoethanol, 0.01% Bromophenol blue)

Storage Instruction

Store at -80°C. Aliquot to avoid repeated freezing and thawing.

Applications

- Western Blot

Gene Info — SH2D1A

Entrez GeneID[4068](#)**GeneBank Accession#**[NM_002351](#)**Protein Accession#**[NP_002342](#)**Gene Name**

SH2D1A

Gene Alias

DSHP, EBVS, FLJ18687, FLJ92177, IMD5, LYP, MTCP1, SAP, XLP, XLPD

Gene Description

SH2 domain protein 1A

Omim ID[300490](#) [308240](#)**Gene Ontology**[Hyperlink](#)**Gene Summary**

This gene encodes a protein that plays a major role in the bidirectional stimulation of T and B cells. This protein contains an SH2 domain and a short tail. It associates with the signaling lymphocyte-activation molecule, thereby acting as an inhibitor of this transmembrane protein by blocking the recruitment of the SH2-domain-containing signal-transduction molecule SHP-2 to its docking site. This protein can also bind to other related surface molecules that are expressed on activated T, B and NK cells, thereby modifying signal transduction pathways in these cells. Mutations in this gene cause lymphoproliferative syndrome X-linked type 1 or Duncan disease, a rare immunodeficiency characterized by extreme susceptibility to infection with Epstein-Barr virus, with symptoms including severe mononucleosis and malignant lymphoma. Multiple transcript variants encoding different isoforms have been found for this gene. [provided by RefSeq]

Other Designations

Duncan's disease|OTTHUMP00000023976|SLAM-associated protein|T cell signal transduction molecule SAP|signaling lymphocyte activation molecule-associated protein

Pathway

- [Natural killer cell mediated cytotoxicity](#)

Disease

- [Common Variable Immunodeficiency](#)
- [Epstein-Barr Virus Infections](#)
- [Genetic Predisposition to Disease](#)
- [Immunologic Deficiency Syndromes](#)
- [Infectious Mononucleosis](#)
- [Lymphoma](#)
- [Lymphoproliferative Disorders](#)
- [Severe Combined Immunodeficiency](#)