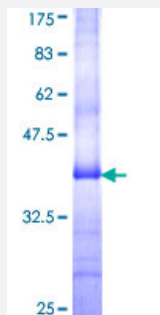


# LTK (Human) Recombinant Protein (Q01)

Catalog # H00004058-Q01

Size 25 ug, 10 ug

## Applications



## Specification

Product Description	Human LTK partial ORF ( NP_002335, 355 a.a. - 460 a.a.) recombinant protein with GST-tag at N-terminal.
Sequence	PSSELFQPLAVTENHGEVEIRRHLCNSHCPLRDCQWQAELQLAECLCPEGMELAVDNVTCMD LHKPPGPLVLMVAVVATSTLSLLMVCGLILVKQKKWQGLQEM
Host	Wheat Germ (in vitro)
Theoretical MW (kDa)	37.29
Interspecies Antigen Sequence	Mouse (76); Rat (70)
Preparation Method	<a href="#">in vitro wheat germ expression system</a>
Purification	Glutathione Sepharose 4 Fast Flow
Quality Control Testing	12.5% SDS-PAGE Stained with Coomassie Blue.
Storage Buffer	50 mM Tris-HCl, 10 mM reduced Glutathione, pH=8.0 in the elution buffer.
Storage Instruction	Store at -80°C. Aliquot to avoid repeated freezing and thawing.
Note	Best use within three months from the date of receipt of this protein.

## Applications

- Enzyme-linked Immunoabsorbent Assay
- Western Blot (Recombinant protein)
- Antibody Production
- Protein Array

## Gene Info — LTK

Entrez GeneID [4058](#)

GeneBank Accession# [NM\\_002344](#)

Protein Accession# [NP\\_002335](#)

Gene Name LTK

Gene Alias TYK1

Gene Description leukocyte receptor tyrosine kinase

Omim ID [151520](#)

Gene Ontology [Hyperlink](#)

**Gene Summary** The protein encoded by this gene is a member of the ros/insulin receptor family of tyrosine kinase s. Tyrosine-specific phosphorylation of proteins is a key to the control of diverse pathways leading to cell growth and differentiation. Multiple transcript variants encoding different isoforms have been found for this gene. [provided by RefSeq]

**Other Designations** leukocyte tyrosine kinase|protein tyrosine kinase 1

## Disease

- [Kidney Failure](#)