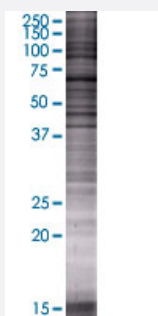


LMNB1 293T Cell Transient Overexpression Lysate(Denatured)

Catalog # H00004001-T01

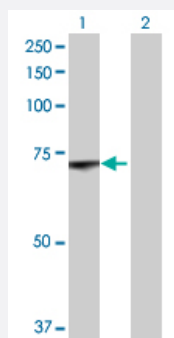
Size 100 uL

Applications



SDS-PAGE Gel

LMNB1 transfected lysate.



Western Blot

Lane 1: LMNB1 transfected lysate (64.57 KDa)

Lane 2: Non-transfected lysate.

Specification

Transfected Cell Line 293T

Plasmid pCMV-LMNB1 full-length

Host Human

Theoretical MW (kDa) 64.57

Quality Control Testing Transient overexpression cell lysate was tested with Anti-LMNB1 antibody ([H00004001-B01](#)) by Western Blots.
SDS-PAGE Gel
LMNB1 transfected lysate.
Western Blot
Lane 1: LMNB1 transfected lysate (64.57 KDa)
Lane 2: Non-transfected lysate.

Storage Buffer	1X Sample Buffer (50 mM Tris-HCl, 2% SDS, 10% glycerol, 300 mM 2-mercaptoethanol, 0.01% Bromophenol blue)
Storage Instruction	Store at -80°C. Aliquot to avoid repeated freezing and thawing.

Applications

- Western Blot

Gene Info — LMNB1

Entrez GeneID	4001
GeneBank Accession#	BC012295.1
Protein Accession#	AAH12295.1
Gene Name	LMNB1
Gene Alias	ADLD, LMN, LMN2, LMNB, MGC111419
Gene Description	lamin B1
Omim ID	150340 169500
Gene Ontology	Hyperlink
Gene Summary	The nuclear lamina consists of a two-dimensional matrix of proteins located next to the inner nuclear membrane. The lamin family of proteins make up the matrix and are highly conserved in evolution. During mitosis, the lamina matrix is reversibly disassembled as the lamin proteins are phosphorylated. Lamin proteins are thought to be involved in nuclear stability, chromatin structure and gene expression. Vertebrate lamins consist of two types, A and B. This gene encodes one of the two B type proteins, B1. [provided by RefSeq]
Other Designations	-

Disease

- [Cardiovascular Diseases](#)
- [Diabetes Mellitus](#)
- [Edema](#)

- [Multiple Sclerosis](#)