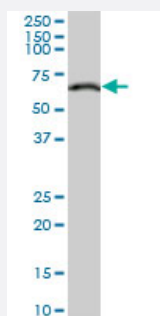


LMNB1 monoclonal antibody (M03), clone 4E4

Catalog # H00004001-M03

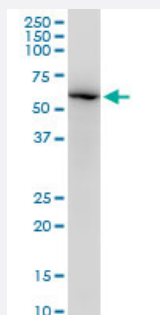
Size 100 ug

Applications



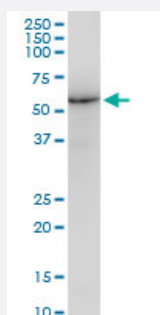
Western Blot (Cell lysate)

LMNB1 monoclonal antibody (M03), clone 4E4. Western Blot analysis of LMNB1 expression in Jurkat (Cat # L017V1).



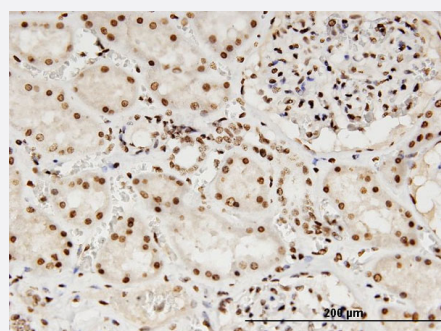
Western Blot (Cell lysate)

LMNB1 monoclonal antibody (M03), clone 4E4. Western Blot analysis of LMNB1 expression in Raw 264.7(Cat # L024V1).



Western Blot (Cell lysate)

LMNB1 monoclonal antibody (M03), clone 4E4. Western Blot analysis of LMNB1 expression in NIH/3T3(Cat # L018V1).

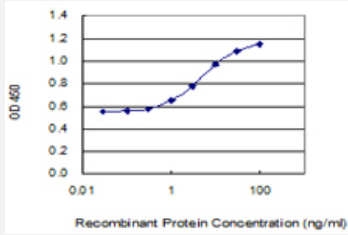


Immunohistochemistry (Formalin/PFA-fixed paraffin-embedded sections)

Immunoperoxidase of monoclonal antibody to LMNB1 on formalin-fixed paraffin-embedded human kidney. [antibody concentration 3 ug/ml]

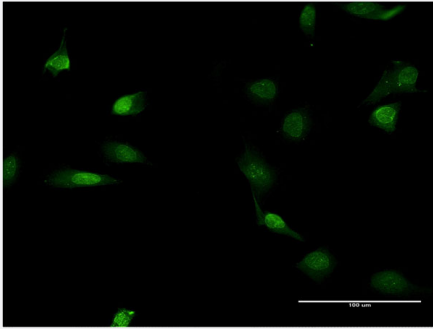
Sandwich ELISA (Recombinant protein)

Detection limit for recombinant GST tagged LMNB1 is 0.3 ng/ml as a capture antibody.

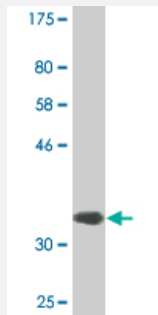


Immunofluorescence

Immunofluorescence of monoclonal antibody to LMNB1 on HeLa cell .
[antibody concentration 10 ug/ml]



Western Blot detection against Immunogen (34.43 KDa) .



Specification

Product Description	Mouse monoclonal antibody raised against a partial recombinant LMNB1.
Immunogen	LMNB1 (NP_005564.1, 107 a.a. ~ 186 a.a) partial recombinant protein with GST tag. MW of the GST tag alone is 26 KDa.
Sequence	LGKCKAEHDQLLLNYAKKESDLNGAQIKLREYEAALNSKDAALATALGDKKSLEGDLEDLKDQIA QLEASLAAAKQLAD
Host	Mouse
Reactivity	Human, Mouse
Isotype	IgG2a Kappa
Quality Control Testing	Antibody Reactive Against Recombinant Protein. Western Blot detection against Immunogen (34.43 KDa) .

Storage Buffer

In 1x PBS, pH 7.4

Storage Instruction

Store at -20°C or lower. Aliquot to avoid repeated freezing and thawing.

Applications

- Western Blot (Cell lysate)

LMNB1 monoclonal antibody (M03), clone 4E4. Western Blot analysis of LMNB1 expression in Jurkat (Cat # L017V1).

[Protocol Download](#)

- Western Blot (Cell lysate)

LMNB1 monoclonal antibody (M03), clone 4E4. Western Blot analysis of LMNB1 expression in Raw 264.7(Cat # L024V1).

[Protocol Download](#)

- Western Blot (Cell lysate)

LMNB1 monoclonal antibody (M03), clone 4E4. Western Blot analysis of LMNB1 expression in NIH/3T3(Cat # L018V1).

[Protocol Download](#)

- Western Blot (Recombinant protein)

[Protocol Download](#)

- Immunohistochemistry (Formalin/PFA-fixed paraffin-embedded sections)

Immunoperoxidase of monoclonal antibody to LMNB1 on formalin-fixed paraffin-embedded human kidney. [antibody concentration 3 ug/ml]

[Protocol Download](#)

- Sandwich ELISA (Recombinant protein)

Detection limit for recombinant GST tagged LMNB1 is 0.3 ng/ml as a capture antibody.

[Protocol Download](#)

- ELISA

- Immunofluorescence

Immunofluorescence of monoclonal antibody to LMNB1 on HeLa cell . [antibody concentration 10 ug/ml]

Gene Info — LMNB1

Entrez GeneID [4001](#)

GeneBank Accession# [NM_005573](#)

Protein Accession# [NP_005564.1](#)

Gene Name LMNB1

Gene Alias ADLD, LMN, LMN2, LMNB, MGC111419

Gene Description lamin B1

Omim ID [150340](#) [169500](#)

Gene Ontology [Hyperlink](#)

Gene Summary The nuclear lamina consists of a two-dimensional matrix of proteins located next to the inner nuclear membrane. The lamin family of proteins make up the matrix and are highly conserved in evolution. During mitosis, the lamina matrix is reversibly disassembled as the lamin proteins are phosphorylated. Lamin proteins are thought to be involved in nuclear stability, chromatin structure and gene expression. Vertebrate lamins consist of two types, A and B. This gene encodes one of the two B type proteins, B1. [provided by RefSeq]

Other Designations -

Disease

- [Cardiovascular Diseases](#)
- [Diabetes Mellitus](#)
- [Edema](#)
- [Multiple Sclerosis](#)