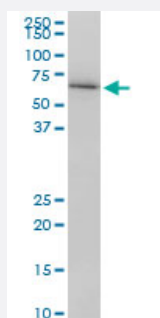


# LMNB1 monoclonal antibody (M01), clone 4B10

Catalog # H00004001-M01

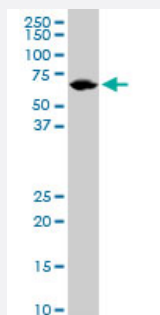
Size 100 ug

## Applications



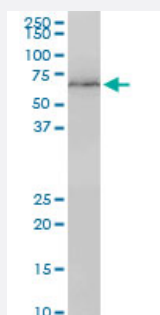
### Western Blot (Cell lysate)

LMNB1 monoclonal antibody (M01), clone 4B10. Western Blot analysis of LMNB1 expression in Raw 264.7(Cat # L024V1 ).



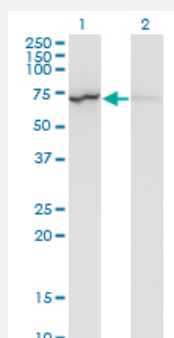
### Western Blot (Cell lysate)

LMNB1 monoclonal antibody (M01), clone 4B10. Western Blot analysis of LMNB1 expression in Jurkat ( Cat # L017V1 ).



### Western Blot (Cell lysate)

LMNB1 monoclonal antibody (M01), clone 4B10. Western Blot analysis of LMNB1 expression in NIH/3T3(Cat # L018V1 ).

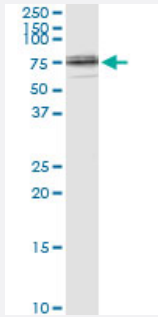


### Western Blot (Transfected lysate)

Western Blot analysis of LMNB1 expression in transfected 293T cell line by LMNB1 monoclonal antibody (M01), clone 4B10.

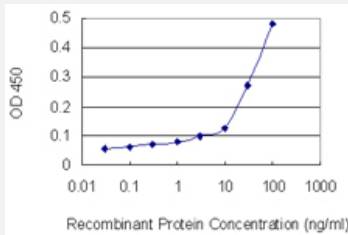
Lane 1: LMNB1 transfected lysate(66.4 KDa).

Lane 2: Non-transfected lysate.



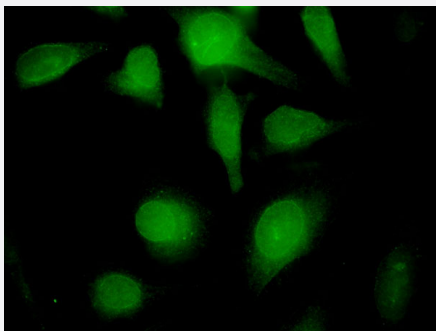
## Immunoprecipitation

Immunoprecipitation of LMNB1 transfected lysate using anti-LMNB1 monoclonal antibody and Protein A Magnetic Bead, and immunoblotted with LMNB1 MaxPab rabbit polyclonal antibody.



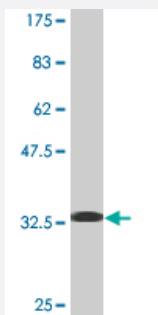
## Sandwich ELISA (Recombinant protein)

Detection limit for recombinant GST tagged LMNB1 is 3 ng/ml as a capture antibody.



## Immunofluorescence

Immunofluorescence of monoclonal antibody to LMNB1 on HeLa cell .  
[antibody concentration 10 ug/ml]



Western Blot detection against Immunogen (34.43 KDa) .

## Specification

### Product Description

Mouse monoclonal antibody raised against a partial recombinant LMNB1.

### Immunogen

LMNB1 (NP\_005564.1, 107 a.a. ~ 186 a.a) partial recombinant protein with GST tag. MW of the GST tag alone is 26 KDa.

|                                |  |
|--------------------------------|--|
| <b>Sequence</b>                | LGKCKAEHDQLLLNYAKKESDLNGAQIKLREYEAALNSKDAALATALGDKKSLEGDLEDLKDQIA<br>QLEASLAAAKKQLAD                     |
| <b>Host</b>                    | Mouse  |
| <b>Reactivity</b>              | Human, Mouse   |
| <b>Isotype</b>                 | IgG2a Kappa  |
| <b>Quality Control Testing</b> | Antibody Reactive Against Recombinant Protein.<br>Western Blot detection against Immunogen (34.43 KDa) . |
| <b>Storage Buffer</b>          | In 1x PBS, pH 7.4  |
| <b>Storage Instruction</b>     | Store at -20°C or lower. Aliquot to avoid repeated freezing and thawing.                                 |

## Applications

- Western Blot (Cell lysate)

LMNB1 monoclonal antibody (M01), clone 4B10. Western Blot analysis of LMNB1 expression in Raw 264.7(Cat # L024V1 ).

[Protocol Download](#)

- Western Blot (Cell lysate)

LMNB1 monoclonal antibody (M01), clone 4B10. Western Blot analysis of LMNB1 expression in Jurkat ( Cat # L017V1 ).

[Protocol Download](#)

- Western Blot (Cell lysate)

LMNB1 monoclonal antibody (M01), clone 4B10. Western Blot analysis of LMNB1 expression in NIH/3T3(Cat # L018V1 ).

[Protocol Download](#)

- Western Blot (Transfected lysate)

Western Blot analysis of LMNB1 expression in transfected 293T cell line by LMNB1 monoclonal antibody (M01), clone 4B10.

Lane 1: LMNB1 transfected lysate(66.4 KDa).

Lane 2: Non-transfected lysate.

[Protocol Download](#)

- Western Blot (Recombinant protein)

[Protocol Download](#)

- Immunoprecipitation

Immunoprecipitation of LMNB1 transfected lysate using anti-LMNB1 monoclonal antibody and Protein A Magnetic Bead, and immunoblotted with LMNB1 MaxPab rabbit polyclonal antibody.

[Protocol Download](#)

- Sandwich ELISA (Recombinant protein)

Detection limit for recombinant GST tagged LMNB1 is 3 ng/ml as a capture antibody.

[Protocol Download](#)

- ELISA

- Immunofluorescence

Immunofluorescence of monoclonal antibody to LMNB1 on HeLa cell . [antibody concentration 10 ug/ml]

## Gene Info — LMNB1

Entrez GeneID [4001](#)

GeneBank Accession# [NM\\_005573](#)

Protein Accession# [NP\\_005564.1](#)

Gene Name LMNB1

Gene Alias ADLD, LMN, LMN2, LMNB, MGC111419

Gene Description lamin B1

Omim ID [150340 169500](#)

Gene Ontology [Hyperlink](#)

### Gene Summary

The nuclear lamina consists of a two-dimensional matrix of proteins located next to the inner nuclear membrane. The lamin family of proteins make up the matrix and are highly conserved in evolution. During mitosis, the lamina matrix is reversibly disassembled as the lamin proteins are phosphorylated. Lamin proteins are thought to be involved in nuclear stability, chromatin structure and gene expression. Vertebrate lamins consist of two types, A and B. This gene encodes one of the two B type proteins, B1. [provided by RefSeq]

Other Designations -

## Publication Reference

- [Fibrinopeptide A Induces Expression of C-Reactive Protein via the ROS-ERK1/2/ P38-NF-κB Signal Pathway in Vascular Smooth Muscle Cells.](#)

Xu S, Zhao J, Liu J, Gou W.

Cellular Physiology and Biochemistry 2018 May; 47(1):266.

Application: WB-Ce, Rat, Vascular smooth muscle cells

## Disease

- [Cardiovascular Diseases](#)
- [Diabetes Mellitus](#)
- [Edema](#)
- [Multiple Sclerosis](#)