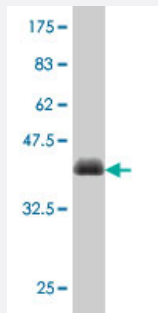


FADS3 polyclonal antibody (A01)

Catalog # H00003995-A01

Size 50 uL

Applications



Western Blot detection against Immunogen (36.89 KDa) .

Specification

Product Description	Mouse polyclonal antibody raised against a partial recombinant FADS3.
Immunogen	FADS3 (NP_068373, 16 a.a. ~ 113 a.a) partial recombinant protein with GST tag.
Sequence	PGAPLPTFCWEQIRAHQPGDKWLVIERRVYDISRWAQRHPGGSRLIGHHGAEDATDAFRAFHQ DLNFVRKFLQPLLIGELAPEEPSQDGPLNAQLVE
Host	Mouse
Reactivity	Human
Interspecies Antigen Sequence	Mouse (90); Rat (89)
Quality Control Testing	Antibody Reactive Against Recombinant Protein. Western Blot detection against Immunogen (36.89 KDa) .
Storage Buffer	50 % glycerol
Storage Instruction	Store at -20°C or lower. Aliquot to avoid repeated freezing and thawing.

Applications

- Western Blot (Recombinant protein)

[Protocol Download](#)

- ELISA

Gene Info — FADS3

Entrez GeneID [3995](#)

GeneBank Accession# [NM_021727](#)

Protein Accession# [NP_068373](#)

Gene Name FADS3

Gene Alias CYB5RP, LLCDL3

Gene Description fatty acid desaturase 3

Omim ID [606150](#)

Gene Ontology [Hyperlink](#)

Gene Summary

The protein encoded by this gene is a member of the fatty acid desaturase (FADS) gene family. Desaturase enzymes regulate unsaturation of fatty acids through the introduction of double bonds between defined carbons of the fatty acyl chain. FADS family members are considered fusion products composed of an N-terminal cytochrome b5-like domain and a C-terminal multiple membrane-spanning desaturase portion, both of which are characterized by conserved histidine motifs. This gene is clustered with family members FADS1 and FADS2 at 11q12-q13.1; this cluster is thought to have arisen evolutionarily from gene duplication based on its similar exon/intron organization. [provided by RefSeq]

Other Designations

delta-9 fatty acid desaturase|delta-9-desaturase|linoleoyl-CoA desaturase (delta-9-desaturase)-like 3

Disease

- [Cardiovascular Diseases](#)
- [Coronary Disease](#)
- [Diabetes Mellitus](#)
- [Dyslipidemias](#)

- [Edema](#)
- [Genetic Predisposition to Disease](#)
- [Syndrome](#)