

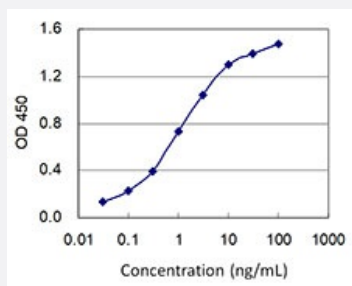
CX Grade

# ABLIM1 monoclonal antibody (M01J), clone 3A1

Catalog # H00003983-M01J

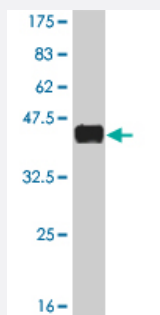
Size 100 ug

## Applications



### Sandwich ELISA (Recombinant protein)

Detection limit for recombinant GST tagged ABLIM1 is 0.03 ng/ml as a capture antibody.



Western Blot detection against Immunogen (36.74 KDa) .

## Specification

### Product Description

Mouse monoclonal antibody raised against a partial recombinant ABLIM1.  
This product is belong to Cell Culture Grade Antibody (CX Grade).

### Immunogen

ABLIM1 (NP\_002304, 637 a.a. ~ 736 a.a) partial recombinant protein with GST tag. MW of the GST tag alone is 26 KDa.

### Sequence

RYDSPINSASHIPSSKTASLPGYGRNGLHRPVSTDFAQYNSYGDVSGGVRDYQTLPDGHMPAMR  
MDRGVSMPNMLEPKIFPYEMLMVTNRGRNKILREVD

### Host

Mouse

### Reactivity

Human

Interspecies Antigen Sequence	Mouse (92)
Preparation Method	Cell Culture Production
Isotype	IgG2a Kappa
Quality Control Testing	Antibody Reactive Against Recombinant Protein. Western Blot detection against Immunogen (36.74 KDa) .
Storage Buffer	In 1x PBS, pH 7.4
Storage Instruction	Store at -20°C or lower. Aliquot to avoid repeated freezing and thawing.

## Applications

- Western Blot (Recombinant protein)

[Protocol Download](#)

- Sandwich ELISA (Recombinant protein)

Detection limit for recombinant GST tagged ABLIM1 is 0.03 ng/ml as a capture antibody.

[Protocol Download](#)

- ELISA

## Gene Info — ABLIM1

Entrez GeneID	<a href="#">3983</a>
GeneBank Accession#	<a href="#">NM_002313</a>
Protein Accession#	<a href="#">NP_002304</a>
Gene Name	ABLIM1
Gene Alias	ABLIM, DKFZp781D0148, FLJ14564, KIAA0059, LIMAB1, LIMATIN, MGC1224
Gene Description	actin binding LIM protein 1
Omim ID	<a href="#">602330</a>
Gene Ontology	<a href="#">Hyperlink</a>

**Gene Summary**

This gene encodes a cytoskeletal LIM protein that binds to actin filaments via a domain that is homologous to erythrocyte dematin. LIM domains, found in over 60 proteins, play key roles in the regulation of developmental pathways. LIM domains also function as protein-binding interfaces, mediating specific protein-protein interactions. The protein encoded by this gene could mediate such interactions between actin filaments and cytoplasmic targets. Alternatively spliced transcript variants encoding different isoforms have been identified. [provided by RefSeq]

**Other Designations**

LIM actin-binding protein 1|OTTHUMP00000020530|OTTHUMP00000020531|OTTHUMP00000020536|actin-binding LIM protein 1|actin-binding double-zinc-finger protein

**Pathway**

- [Axon guidance](#)

**Disease**

- [Alzheimer Disease](#)
- [Arthritis](#)
- [Bipolar Disorder](#)
- [Coronary Artery Disease](#)
- [Crohn Disease](#)
- [Diabetes Mellitus](#)
- [Genetic Predisposition to Disease](#)
- [Hypertension](#)