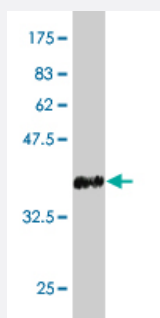


LHX1 monoclonal antibody (M10), clone 2A8

Catalog # H00003975-M10

Size 100 ug

Applications



Western Blot detection against Immunogen (36.74 KDa) .

Specification

Product Description	Mouse monoclonal antibody raised against a partial recombinant LHX1.
Immunogen	LHX1 (NP_005559, 1 a.a. ~ 100 a.a) partial recombinant protein with GST tag. MW of the GST tag alone is 26 KDa.
Sequence	MVHCAGCKRPILDRFLLNVLDRAWHVKCVQCCECKCNLTEKCF SREGKLYCKNDFFRCFGTKC AGCAQGISPDLVRRARSKVFHLNCF TCMMCNKQLST
Host	Mouse
Reactivity	Human
Interspecies Antigen Sequence	Mouse (100); Rat (100)
Isotype	IgG2a Kappa
Quality Control Testing	Antibody Reactive Against Recombinant Protein. Western Blot detection against Immunogen (36.74 KDa) .
Storage Buffer	In 1x PBS, pH 7.4
Storage Instruction	Store at -20°C or lower. Aliquot to avoid repeated freezing and thawing.

Applications

- Western Blot (Recombinant protein)

[Protocol Download](#)

- ELISA

Gene Info — LHX1

Entrez GeneID	3975
GeneBank Accession#	NM_005568
Protein Accession#	NP_005559
Gene Name	LHX1
Gene Alias	LIM-1, LIM1, MGC126723, MGC138141
Gene Description	LIM homeobox 1
Omim ID	601999
Gene Ontology	Hyperlink
Gene Summary	This gene encodes a member of a large protein family which contains the LIM domain, a unique cysteine-rich zinc-binding domain. The encoded protein may function as a transcriptional regulator and be involved in control of differentiation and development of neural and lymphoid cells. A similar protein in mice is an essential regulator of the vertebrate head organizer. [provided by RefSeq]
Other Designations	LIM homeobox protein 1