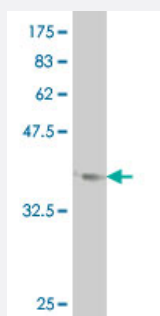


LHX1 monoclonal antibody (M06), clone 1C11

Catalog # H00003975-M06

Size 100 ug

Applications



Western Blot detection against Immunogen (36.74 KDa) .

Specification

| | |
|--------------------------------------|---|
| Product Description | Mouse monoclonal antibody raised against a partial recombinant LHX1. |
| Immunogen | LHX1 (NP_005559, 1 a.a. ~ 100 a.a) partial recombinant protein with GST tag. MW of the GST tag alone is 26 KDa. |
| Sequence | MVHCAGCKRPILDRFLNVLDRAWHVKCVQCCECKCNLTEKCF SREGKLYCKNDFFRFCFGTKC AGCAQGISPDLVRRARSKVFHLNCF TCMMCNKQLST |
| Host | Mouse |
| Reactivity | Human |
| Interspecies Antigen Sequence | Mouse (100); Rat (100) |
| Isotype | IgG2a Kappa |
| Quality Control Testing | Antibody Reactive Against Recombinant Protein. Western Blot detection against Immunogen (36.74 KDa) . |
| Storage Buffer | In 1x PBS, pH 7.4 |
| Storage Instruction | Store at -20°C or lower. Aliquot to avoid repeated freezing and thawing. |

Applications

- Western Blot (Recombinant protein)

[Protocol Download](#)

- ELISA

Gene Info — LHX1

| | |
|---------------------|--|
| Entrez GeneID | 3975 |
| GeneBank Accession# | NM_005568 |
| Protein Accession# | NP_005559 |
| Gene Name | LHX1 |
| Gene Alias | LIM-1, LIM1, MGC126723, MGC138141 |
| Gene Description | LIM homeobox 1 |
| Omim ID | 601999 |
| Gene Ontology | Hyperlink |
| Gene Summary | This gene encodes a member of a large protein family which contains the LIM domain, a unique cysteine-rich zinc-binding domain. The encoded protein may function as a transcriptional regulator and be involved in control of differentiation and development of neural and lymphoid cells. A similar protein in mice is an essential regulator of the vertebrate head organizer. [provided by RefSeq] |
| Other Designations | LIM homeobox protein 1 |