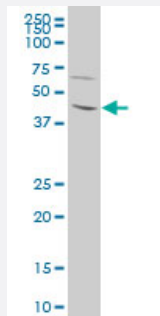


# LHX1 polyclonal antibody (A01)

Catalog # H00003975-A01

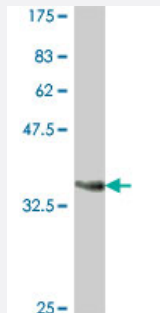
Size 50 uL

## Applications



### Western Blot (Cell lysate)

LHX1 polyclonal antibody (A01), Lot # O60501JCS1 Western Blot analysis of LHX1 expression in 293 ( Cat # L026V1 ).



Western Blot detection against Immunogen (37.11 KDa) .

## Specification

Product Description	Mouse polyclonal antibody raised against a partial recombinant LHX1.
Immunogen	LHX1 (NP_005559, 1 a.a. ~ 100 a.a) partial recombinant protein with GST tag.
Sequence	MVHCAGCKRPILDRFLLNVLDRAWHVKCVQCCECKCNLTEKCFSSREGKLYCKNDFFRCFGTKC AGCAQGISPDLVRRARSKVFHLNCFTCMCNKQLST
Host	Mouse
Reactivity	Human
Interspecies Antigen Sequence	Mouse (100); Rat (100)

**Quality Control Testing**

Antibody Reactive Against Recombinant Protein.  
Western Blot detection against Immunogen (37.11 KDa) .

**Storage Buffer**

50 % glycerol

**Storage Instruction**

Store at -20°C or lower. Aliquot to avoid repeated freezing and thawing.

## Applications

- Western Blot (Cell lysate)

LHX1 polyclonal antibody (A01), Lot # O60501JCS1 Western Blot analysis of LHX1 expression in 293 ( Cat # L026V1 ).

[Protocol Download](#)

- Western Blot (Recombinant protein)

[Protocol Download](#)

- ELISA

## Gene Info — LHX1

**Entrez GeneID**

[3975](#)

**GeneBank Accession#**

[NM\\_005568](#)

**Protein Accession#**

[NP\\_005559](#)

**Gene Name**

LHX1

**Gene Alias**

LIM-1, LIM1, MGC126723, MGC138141

**Gene Description**

LIM homeobox 1

**Omim ID**

[601999](#)

**Gene Ontology**

[Hyperlink](#)

**Gene Summary**

This gene encodes a member of a large protein family which contains the LIM domain, a unique cysteine-rich zinc-binding domain. The encoded protein may function as a transcriptional regulator and be involved in control of differentiation and development of neural and lymphoid cells. A similar protein in mice is an essential regulator of the vertebrate head organizer. [provided by RefSeq]

**Other Designations**

LIM homeobox protein 1