

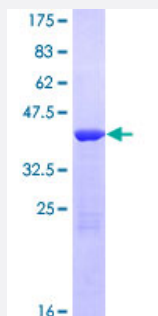
Full-Length

# LGALS7 (Human) Recombinant Protein (P01)

Catalog # H00003963-P01

Size 10 ug, 25 ug

## Applications



## Specification

### Product Description

Human LGALS7 full-length ORF ( NP\_002298.1, 1 a.a. - 136 a.a.) recombinant protein with GST-tag at N-terminal.

### Sequence

MSNVPHKSSLPEGIRPGTVLRIRGLVPPNASRFHVNLLCGEEQGSDAALHFNPRLDTSEVVFNSK  
EQGSWGREERGPGVPFQRGQPFEVLIASDDGFKAVVGDAQYHHFRHRLPLARVRLVEVGDDV  
QLDSVRIF

### Host

Wheat Germ (in vitro)

### Theoretical MW (kDa)

41.5

### Interspecies Antigen Sequence

Mouse (78); Rat (73)

### Preparation Method

[in vitro wheat germ expression system](#)

### Purification

Glutathione Sepharose 4 Fast Flow

### Quality Control Testing

12.5% SDS-PAGE Stained with Coomassie Blue.

### Storage Buffer

50 mM Tris-HCl, 10 mM reduced Glutathione, pH=8.0 in the elution buffer.

### Storage Instruction

Store at -80°C. Aliquot to avoid repeated freezing and thawing.

## Note

Best use within three months from the date of receipt of this protein.

## Applications

- Enzyme-linked Immunoabsorbent Assay
- Western Blot (Recombinant protein)
- Antibody Production
- Protein Array

## Gene Info — LGALS7

Entrez GeneID [3963](#)

GeneBank Accession# [NM\\_002307.1](#)

Protein Accession# [NP\\_002298.1](#)

Gene Name LGALS7

Gene Alias GAL7, LGALS7A

Gene Description lectin, galactoside-binding, soluble, 7

Omim ID [600615](#)

Gene Ontology [Hyperlink](#)

**Gene Summary** The galectins are a family of beta-galactoside-binding proteins implicated in modulating cell-cell and cell-matrix interactions. Differential and in situ hybridization studies indicate that this lectin is specifically expressed in keratinocytes and found mainly in stratified squamous epithelium. A duplicate copy of this gene (GeneID:653499) is found adjacent to, but on the opposite strand on chromosome 19. [provided by RefSeq]

**Other Designations** galectin 7|galectin-7