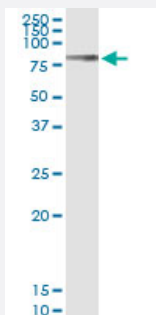


LGALS3BP (Human) IP-WB Antibody Pair

Catalog # H00003959-PW1

Size 1 Set

Applications



Immunoprecipitation of LGALS3BP transfected lysate using rabbit polyclonal anti-LGALS3BP and Protein A Magnetic Bead ([U0007](#)), and immunoblotted with mouse purified polyclonal anti-LGALS3BP.

Specification

Product Description	This IP-WB antibody pair set comes with one antibody for immunoprecipitation and another to detect the precipitated protein in western blot.
Reactivity	Human
Interspecies Antigen Sequence	Mouse (68%); Rat (66%)
Quality Control Testing	Immunoprecipitation-Western Blot (IP-WB) Immunoprecipitation of LGALS3BP transfected lysate using rabbit polyclonal anti-LGALS3BP and Protein A Magnetic Bead (U0007), and immunoblotted with mouse purified polyclonal anti-LGALS3BP.
Supplied Product	Antibody pair set content: 1. Antibody pair for IP: rabbit polyclonal anti-LGALS3BP (300 ul) 2. Antibody pair for WB: mouse purified polyclonal anti-LGALS3BP (50 ug)
Storage Instruction	Store reagents of the antibody pair set at -20°C or lower. Please aliquot to avoid repeated freeze/thaw cycle. Reagents should be returned to -20°C storage immediately after use.

Applications

- Immunoprecipitation-Western Blot

[Protocol Download](#)

Gene Info — LGALS3BP

Entrez GeneID [3959](#)

Gene Name LGALS3BP

Gene Alias 90K, BTBD17B, MAC-2-BP

Gene Description lectin, galactoside-binding, soluble, 3 binding protein

Omim ID [600626](#)

Gene Ontology [Hyperlink](#)

Gene Summary The galectins are a family of beta-galactoside-binding proteins implicated in modulating cell-cell and cell-matrix interactions. LGALS3BP has been found elevated in the serum of patients with cancer and in those infected by the human immunodeficiency virus (HIV). It appears to be implicated in immune response associated with natural killer (NK) and lymphokine-activated killer (LAK) cell cytotoxicity. Using fluorescence in situ hybridization the full length 90K cDNA has been localized to chromosome 17q25. The native protein binds specifically to a human macrophage-associated lectin known as Mac-2 and also binds galectin 1. [provided by RefSeq]

Other Designations L3 antigen|Mac-2-binding protein|galectin 3 binding protein|serum protein 90K