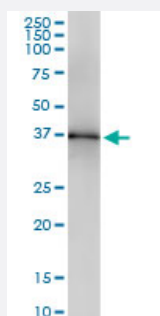


# LFNG monoclonal antibody (M11), clone 1B6

Catalog # H00003955-M11

Size 100 ug

## Applications



### Western Blot (Tissue lysate)

LFNG monoclonal antibody (M11), clone 1B6. Western Blot analysis of LFNG expression in human pancreas.

## Specification

|                                |   |
|--------------------------------|---|
| <b>Product Description</b>     | Mouse monoclonal antibody raised against a partial recombinant LFNG.  |
| <b>Immunogen</b>               | LFNG (NP_002295, 1 a.a. ~ 125 a.a) partial recombinant protein with GST tag. MW of the GST tag alone is 26 KDa.                 |
| <b>Sequence</b>                | MTPGRCCLAADIQVETFIPTDGEDEALARHTGNVVITNCSAAHSRQALSCKMAVEYDRFIESGRK<br>WFCHVDDDNVNLRLALLASYPHTRDVYVGKPSLDRPIQAMERVSENKVRPVHFWFAT* |
| <b>Host</b>                    | Mouse   |
| <b>Reactivity</b>              | Human   |
| <b>Isotype</b>                 | IgG2a Kappa   |
| <b>Quality Control Testing</b> | Antibody Reactive Against Recombinant Protein.  |
| <b>Storage Buffer</b>          | In 1x PBS, pH 7.4   |
| <b>Storage Instruction</b>     | Store at -20°C or lower. Aliquot to avoid repeated freezing and thawing.  |

## Applications

- Western Blot (Tissue lysate)

LFNG monoclonal antibody (M11), clone 1B6. Western Blot analysis of LFNG expression in human pancreas.

[Protocol Download](#)

- ELISA

## Gene Info — LFNG

|               |                      |
|---------------|----------------------|
| Entrez GeneID | <a href="#">3955</a> |
|---------------|----------------------|

|                     |                           |
|---------------------|---------------------------|
| GeneBank Accession# | <a href="#">NM_002304</a> |
|---------------------|---------------------------|

|                    |                           |
|--------------------|---------------------------|
| Protein Accession# | <a href="#">NP_002295</a> |
|--------------------|---------------------------|

|           |      |
|-----------|------|
| Gene Name | LFNG |
|-----------|------|

|            |       |
|------------|-------|
| Gene Alias | SCDO3 |
|------------|-------|

|                  |  |
|------------------|--|
| Gene Description | LFNG O-fucosylpeptide 3-beta-N-acetylglucosaminyltransferase |
|------------------|--|

|         |                               |
|---------|-------------------------------|
| Omim ID | <a href="#">602576 609813</a> |
|---------|-------------------------------|

|               |                           |
|---------------|---------------------------|
| Gene Ontology | <a href="#">Hyperlink</a> |
|---------------|---------------------------|

|              |  |
|--------------|--|
| Gene Summary | This gene encodes a member of the glycosyltransferase superfamily. The encoded protein is a single-pass type II Golgi membrane protein that functions as a fucose-specific glycosyltransferase, adding an N-acetylglucosamine to the fucose residue of a group of signaling receptors involved in regulating cell fate decisions during development. Mutations in this gene have been associated with autosomal recessive spondylocostal dysostosis 3. Alternatively spliced transcript variants that encode different isoforms have been described, however, not all variants have been fully characterized. [provided by RefSeq] |
|--------------|--|

|                    |                |
|--------------------|----------------|
| Other Designations | lunatic fringe |
|--------------------|----------------|

## Pathway

- [Notch signaling pathway](#)