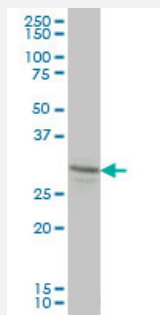


LFNG monoclonal antibody (M01), clone 2D10-3C11

Catalog # H00003955-M01

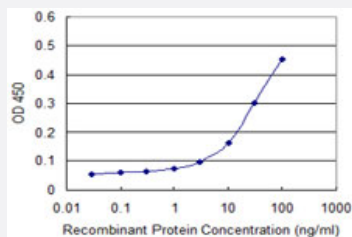
Size 100 ug

Applications



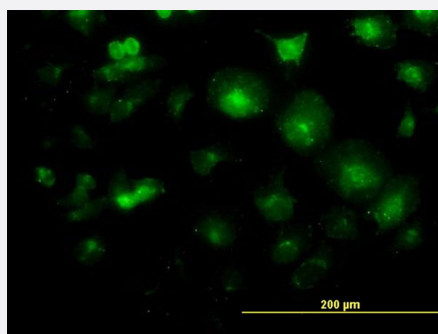
Western Blot (Cell lysate)

LFNG monoclonal antibody (M01), clone 2D10-3C11 Western Blot analysis of LFNG expression in HL-60 (Cat # L014V1).



Sandwich ELISA (Recombinant protein)

Detection limit for recombinant GST tagged LFNG is approximately 3ng/ml as a capture antibody.



Immunofluorescence

Immunofluorescence of monoclonal antibody to LFNG on HeLa cell. [antibody concentration 10 ug/ml]

Specification

Product Description

Mouse monoclonal antibody raised against a full length recombinant LFNG.

Immunogen	LFNG (AAH14851, 1 a.a. ~ 250 a.a) full-length recombinant protein with GST tag. MW of the GST tag alone is 26 KDa.
Sequence	MTPGRCCCLAADIQVETFIPTDGEDEALARHTGNVVITNCSAAHSRQALSCKMAVEYDRFIESGRK WFCHVDDDDNYVNLRALRLLLASYPHTRDVYVGKPSLDRPIQAMERVSENKVRPVHFWFATGGAG FCISRLALKMSPWASGGHFMNTAERIRLPDDCTIGYVEALLGVPLIRSGLFHSHLENLQQVPTSE LHEQVTLSYGMFENKRNAVHVKGPFVSVEADPSRFRSIHCHLYPDTPWCPRTAIF
Host	Mouse
Reactivity	Human
Isotype	IgG1 kappa
Quality Control Testing	Antibody Reactive Against Recombinant Protein.
Storage Buffer	In 1x PBS, pH 7.4
Storage Instruction	Store at -20°C or lower. Aliquot to avoid repeated freezing and thawing.

Applications

- Western Blot (Cell lysate)

LFNG monoclonal antibody (M01), clone 2D10-3C11 Western Blot analysis of LFNG expression in HL-60 (Cat # L014V1).

[Protocol Download](#)

- Sandwich ELISA (Recombinant protein)

Detection limit for recombinant GST tagged LFNG is approximately 3ng/ml as a capture antibody.

[Protocol Download](#)

- ELISA

- Immunofluorescence

Immunofluorescence of monoclonal antibody to LFNG on HeLa cell. [antibody concentration 10 ug/ml]

Gene Info — LFNG

Entrez GeneID	3955
GeneBank Accession#	BC014851
Protein Accession#	AAH14851

Gene Name	LFNG
Gene Alias	SCDO3
Gene Description	LFNG O-fucosylpeptide 3-beta-N-acetylglucosaminyltransferase
Omim ID	602576 609813
Gene Ontology	Hyperlink
Gene Summary	<p>This gene encodes a member of the glycosyltransferase superfamily. The encoded protein is a single-pass type II Golgi membrane protein that functions as a fucose-specific glycosyltransferase, adding an N-acetylglucosamine to the fucose residue of a group of signaling receptors involved in regulating cell fate decisions during development. Mutations in this gene have been associated with autosomal recessive spondylocostal dysostosis 3. Alternatively spliced transcript variants that encode different isoforms have been described, however, not all variants have been fully characterized. [provided by RefSeq]</p>
Other Designations	lunatic fringe

Pathway

- [Notch signaling pathway](#)