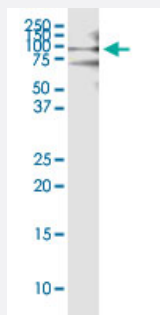


# LETM1 (Human) IP-WB Antibody Pair

Catalog # H00003954-PW3

Size 1 Set

## Applications



Immunoprecipitation of LETM1 transfected lysate using rabbit polyclonal anti-LETM1 and Protein A Magnetic Bead ([U0007](#)), and immunoblotted with mouse purified polyclonal anti-LETM1.

## Specification

<b>Product Description</b>	This IP-WB antibody pair set comes with one antibody for immunoprecipitation and another to detect the precipitated protein in western blot.
<b>Reactivity</b>	Human
<b>Interspecies Antigen Sequence</b>	Mouse (83%); Rat (83%)
<b>Quality Control Testing</b>	Immunoprecipitation-Western Blot (IP-WB) Immunoprecipitation of LETM1 transfected lysate using rabbit polyclonal anti-LETM1 and Protein A Magnetic Bead ( <a href="#">U0007</a> ), and immunoblotted with mouse purified polyclonal anti-LETM1.
<b>Supplied Product</b>	Antibody pair set content: 1. Antibody pair for IP: rabbit polyclonal anti-LETM1 (300 ul) 2. Antibody pair for WB: mouse purified polyclonal anti-LETM1 (50 ug)
<b>Storage Instruction</b>	Store reagents of the antibody pair set at -20°C or lower. Please aliquot to avoid repeated freeze thaw cycle. Reagents should be returned to -20°C storage immediately after use.

## Applications

- Immunoprecipitation-Western Blot

[Protocol Download](#)

## Gene Info — LETM1

Entrez GeneID	<a href="#">3954</a>
---------------	----------------------

Gene Name	LETM1
-----------	-------

Gene Alias	-
------------	---

Gene Description	leucine zipper-EF-hand containing transmembrane protein 1
------------------	---

Omim ID	<a href="#">604407</a>
---------	------------------------

Gene Ontology	<a href="#">Hyperlink</a>
---------------	---------------------------

Other Designations	-
--------------------	---