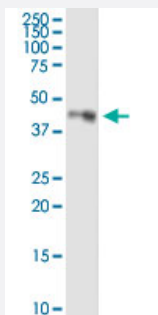


# LDHC (Human) IP-WB Antibody Pair

Catalog # H00003948-PW2

Size 1 Set

## Applications



Immunoprecipitation of LDHC transfected lysate using rabbit purified polyclonal anti-LDHC and Protein A Magnetic Bead ([U0007](#)), and immunoblotted with mouse purified polyclonal anti-LDHC.

## Specification

<b>Product Description</b>	This IP-WB antibody pair set comes with one antibody for immunoprecipitation and another to detect the precipitated protein in western blot.
<b>Reactivity</b>	Human
<b>Quality Control Testing</b>	Immunoprecipitation-Western Blot (IP-WB) Immunoprecipitation of LDHC transfected lysate using rabbit purified polyclonal anti-LDHC and Protein A Magnetic Bead ( <a href="#">U0007</a> ), and immunoblotted with mouse purified polyclonal anti-LDHC.
<b>Supplied Product</b>	Antibody pair set content: 1. Antibody pair for IP: rabbit purified polyclonal anti-LDHC (300 ug) 2. Antibody pair for WB: mouse purified polyclonal anti-LDHC (50 ug)
<b>Storage Instruction</b>	Store reagents of the antibody pair set at -20°C or lower. Please aliquot to avoid repeated freeze thaw cycle. Reagents should be returned to -20°C storage immediately after use.

## Applications

- Immunoprecipitation-Western Blot

[Protocol Download](#)

## Gene Info — LDHC

Entrez GeneID	<a href="#">3948</a>
Gene Name	LDHC
Gene Alias	CT32, LDH3, LDHX, MGC111073
Gene Description	lactate dehydrogenase C
Omim ID	<a href="#">150150</a>
Gene Ontology	<a href="#">Hyperlink</a>
Gene Summary	Lactate dehydrogenase C catalyzes the conversion of L-lactate and NAD to pyruvate and NADH in the final step of anaerobic glycolysis. LDHC is testis-specific and belongs to the lactate dehydrogenase family. Two transcript variants have been detected which differ in the 5' untranslated region. [provided by RefSeq]
Other Designations	L-lactate dehydrogenase C cancer/testis antigen 32

## Pathway

- [Cysteine and methionine metabolism](#)
- [Glycolysis / Gluconeogenesis](#)
- [Metabolic pathways](#)
- [Propanoate metabolism](#)
- [Pyruvate metabolism](#)