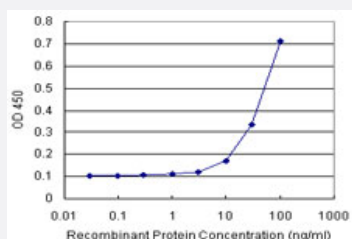


LCK (Human) Matched Antibody Pair

Catalog # H00003932-AP11 Size 1 Set

Applications



Sandwich ELISA detection sensitivity ranging from 10 ng/ml to 100 ng/ml.

Specification

Product Description	This antibody pair set comes with a matched antibody pair to detect and quantify the protein level of human LCK.
Reactivity	Human
Quality Control Testing	Standard curve using recombinant protein (H00003932-P01) as an analyte. Sandwich ELISA detection sensitivity ranging from 10 ng/ml to 100 ng/ml.
Supplied Product	Antibody pair set content: 1. Capture antibody: rabbit MaxPab® affinity purified polyclonal anti-LCK (100 ug) 2. Detection antibody: mouse monoclonal anti-LCK, IgG1 Kappa (20 ug) *Reagents are sufficient for at least 1-2 x 96 well plates using recommended protocols.
Storage Instruction	Store reagents of the antibody pair set at -20°C or lower. Please aliquot to avoid repeated freeze thaw cycle. Reagents should be returned to -20°C storage immediately after use.

Applications

- ELISA Pair (Recombinant protein)

[Protocol Download](#)

Gene Info — LCK

Entrez GeneID [3932](#)

Gene Name LCK

Gene Alias YT16, p56lck, pp58lck

Gene Description lymphocyte-specific protein tyrosine kinase

Omim ID [153390](#)

Gene Ontology [Hyperlink](#)

Gene Summary This gene is a member of the Src family of protein tyrosine kinases (PTKs). The encoded protein is a key signaling molecule in the selection and maturation of developing T-cells. It contains N-terminal sites for myristylation and palmitoylation, a PTK domain, and SH2 and SH3 domains which are involved in mediating protein-protein interactions with phosphotyrosine-containing and proline-rich motifs, respectively. The protein localizes to the plasma membrane and pericentrosomal vesicles, and binds to cell surface receptors, including CD4 and CD8, and other signaling molecules. Multiple alternatively spliced variants, encoding the same protein, have been described. [provided by RefSeq]

Other Designations T-lymphocyte specific protein tyrosine kinase p56lck|p56(LSTRA) protein-tyrosine kinase|protein tyrosine kinase|proto-oncogene tyrosine-protein kinase LCK

Pathway

- [Natural killer cell mediated cytotoxicity](#)
- [Primary immunodeficiency](#)
- [T cell receptor signaling pathway](#)

Disease

- [HIV Infections](#)
- [Tobacco Use Disorder](#)