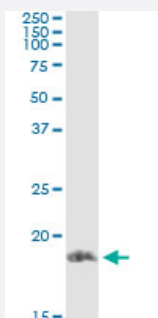


STMN1 (Human) IP-WB Antibody Pair

Catalog # H00003925-PW1

Size 1 Set

Applications



Immunoprecipitation of STMN1 transfected lysate using mouse monoclonal anti-STMN1 and Protein A Magnetic Bead ([U0007](#)), and immunoblotted with rabbit polyclonal anti-STMN1.

Specification

Product Description	This IP-WB antibody pair set comes with one antibody for immunoprecipitation and another to detect the precipitated protein in western blot.
Reactivity	Human
Quality Control Testing	Immunoprecipitation-Western Blot (IP-WB) Immunoprecipitation of STMN1 transfected lysate using mouse monoclonal anti-STMN1 and Protein A Magnetic Bead (U0007), and immunoblotted with rabbit polyclonal anti-STMN1.
Supplied Product	Antibody pair set content: 1. Antibody pair for IP: mouse monoclonal anti-STMN1 (300 ul) 2. Antibody pair for WB: rabbit polyclonal anti-STMN1 (50 ul)
Storage Instruction	Store reagents of the antibody pair set at -20°C or lower. Please aliquot to avoid repeated freeze thaw cycle. Reagents should be returned to -20°C storage immediately after use.

Applications

- Immunoprecipitation-Western Blot

[Protocol Download](#)

Gene Info — STMN1

Entrez GeneID	3925
Gene Name	STMN1
Gene Alias	LAP18, Lag, OP18, PP17, PP19, PR22, SMN
Gene Description	stathmin 1/oncoprotein 18
Omim ID	151442
Gene Ontology	Hyperlink
Gene Summary	This gene belongs to the stathmin family of genes. It encodes a ubiquitous cytosolic phosphoprotein proposed to function as an intracellular relay integrating regulatory signals of the cellular environment. The encoded protein is involved in the regulation of the microtubule filament system by destabilizing microtubules. It prevents assembly and promotes disassembly of microtubules. Multiple transcript variants encoding different isoforms have been found for this gene. [provided by RefSeq]
Other Designations	OTTHUMP00000008527 OTTHUMP00000008528 OTTHUMP00000008530 leukemia-associated phosphoprotein p18 metablastin oncoprotein 18 phosphoprotein 19 prolin stathmin 1

Pathway

- [MAPK signaling pathway](#)

Disease

- [Anorexia Nervosa](#)
- [Bulimia](#)
- [Genetic Predisposition to Disease](#)
- [Startle Reaction](#)