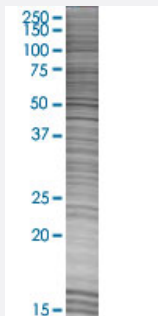


LAMP1 293T Cell Transient Overexpression Lysate(Denatured)

Catalog # H00003916-T01

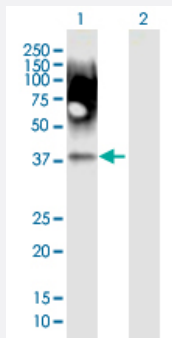
Size 100 uL

Applications



SDS-PAGE Gel

LAMP1 transfected lysate.



Western Blot

Lane 1: LAMP1 transfected lysate (44.9 KDa)

Lane 2: Non-transfected lysate.

Specification

Transfected Cell Line	293T
Plasmid	pCMV-LAMP1 full-length
Host	Human
Theoretical MW (kDa)	44.9
Interspecies Antigen Sequence	Mouse (65); Rat (65)

Quality Control Testing

Transient overexpression cell lysate was tested with Anti-LAMP1 antibody ([H00003916-B01P](#)) by Western Blots.
SDS-PAGE Gel
LAMP1 transfected lysate.
Western Blot
Lane 1: LAMP1 transfected lysate (44.9 KDa)
Lane 2: Non-transfected lysate.

Storage Buffer

1X Sample Buffer (50 mM Tris-HCl, 2% SDS, 10% glycerol, 300 mM 2-mercaptoethanol, 0.01% Bromophenol blue)

Storage Instruction

Store at -80°C. Aliquot to avoid repeated freezing and thawing.

Applications

- Western Blot

Gene Info — LAMP1

Entrez GeneID

[3916](#)

GeneBank Accession#

[NM_005561.3](#)

Protein Accession#

[NP_005552.3](#)

Gene Name

LAMP1

Gene Alias

CD107a, LAMPA, LGP120

Gene Description

lysosomal-associated membrane protein 1

Omim ID

[153330](#)

Gene Ontology

[Hyperlink](#)

Gene Summary

The protein encoded by this gene is a member of a family of membrane glycoproteins. This glycoprotein provides selectins with carbohydrate ligands. It may also play a role in tumor cell metastasis. [provided by RefSeq]

Other Designations

OTTHUMP00000040663

Pathway

- [Lysosome](#)