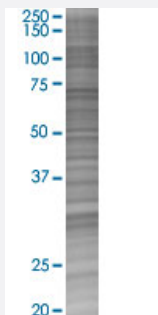


LAMA5 293T Cell Transient Overexpression Lysate(Denatured)

Catalog # H00003911-T01

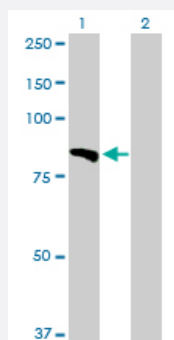
Size 100 uL

Applications



SDS-PAGE Gel

LAMA5 transfected lysate.



Western Blot

Lane 1: LAMA5 transfected lysate (74.00 KDa)

Lane 2: Non-transfected lysate.

Specification

Transfected Cell Line 293T

Plasmid pCMV-LAMA5 full-length

Host Human

Theoretical MW (kDa) 74

Quality Control Testing Transient overexpression cell lysate was tested with Anti-LAMA5 antibody ([H00003911-D01P](#)) by Western Blots.
 SDS-PAGE Gel
 LAMA5 transfected lysate.
 Western Blot
 Lane 1: LAMA5 transfected lysate (74.00 KDa)
 Lane 2: Non-transfected lysate.

Storage Buffer	1X Sample Buffer (50 mM Tris-HCl, 2% SDS, 10% glycerol, 300 mM 2-mercaptoethanol, 0.01% Bromophenol blue)
Storage Instruction	Store at -80°C. Aliquot to avoid repeated freezing and thawing.

Applications

- Western Blot

Gene Info — LAMA5

Entrez GeneID	3911
GeneBank Accession#	BC003355.1
Protein Accession#	AAH03355.1
Gene Name	LAMA5
Gene Alias	KIAA1907
Gene Description	laminin, alpha 5
Omim ID	601033
Gene Ontology	Hyperlink

Gene Summary	Components of the extracellular matrix exert myriad effects on tissues throughout the body. In particular, the laminins, a family of heterotrimeric extracellular glycoproteins, affect tissue development and integrity in such diverse organs as the kidney, lung, skin, and nervous system. It is thought that laminins mediate the attachment, migration, and organization of cells into tissues during embryonic development by interacting with other extracellular matrix components. Laminins function as heterotrimeric complexes of alpha, beta, and gamma chains, with each chain type representing a different subfamily of proteins. The protein encoded by this gene belongs to the alpha subfamily of laminin chains and is a major component of basement membranes. Two transcript variants encoding different isoforms have been found for this gene, but the full-length nature of one of them has not been determined. [provided by RefSeq]
--------------	--

Other Designations	laminin alpha 5 laminin alpha-5 chain
--------------------	---------------------------------------

Pathway

- [ECM-receptor interaction](#)

- [Focal adhesion](#)
- [Pathways in cancer](#)
- [Small cell lung cancer](#)

Disease

- [Cardiovascular Diseases](#)
- [Diabetes Mellitus](#)
- [Edema](#)