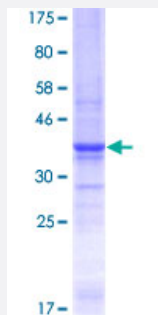


LAMA5 (Human) Recombinant Protein (Q01)

Catalog # H00003911-Q01

Size 25 ug, 10 ug

Applications



Specification

Product Description	Human LAMA5 partial ORF (AAH03355.1, 1 a.a. - 100 a.a.) recombinant protein with GST-tag at N-terminal.
Sequence	MGVSLRDKKVHWVYQLGEAGPAVLSIDEDIGEQFAAVSLDRTLQFGHMSVTVERQMIQETKGDT VAPGAEGLLNLRPDDFVFYVGGYPSTFTPPPLLRF
Host	Wheat Germ (in vitro)
Theoretical MW (kDa)	36.63
Preparation Method	in vitro wheat germ expression system
Purification	Glutathione Sepharose 4 Fast Flow
Quality Control Testing	12.5% SDS-PAGE Stained with Coomassie Blue.
Storage Buffer	50 mM Tris-HCl, 10 mM reduced Glutathione, pH=8.0 in the elution buffer.
Storage Instruction	Store at -80°C. Aliquot to avoid repeated freezing and thawing.
Note	Best use within three months from the date of receipt of this protein.

Applications

- Enzyme-linked Immunoabsorbent Assay
- Western Blot (Recombinant protein)
- Antibody Production
- Protein Array

Gene Info — LAMA5

Entrez GeneID [3911](#)

GeneBank Accession# [BC003355](#)

Protein Accession# [AAH03355.1](#)

Gene Name LAMA5

Gene Alias KIAA1907

Gene Description laminin, alpha 5

Omim ID [601033](#)

Gene Ontology [Hyperlink](#)

Gene Summary

Components of the extracellular matrix exert myriad effects on tissues throughout the body. In particular, the laminins, a family of heterotrimeric extracellular glycoproteins, affect tissue development and integrity in such diverse organs as the kidney, lung, skin, and nervous system. It is thought that laminins mediate the attachment, migration, and organization of cells into tissues during embryonic development by interacting with other extracellular matrix components. Laminins function as heterotrimeric complexes of alpha, beta, and gamma chains, with each chain type representing a different subfamily of proteins. The protein encoded by this gene belongs to the alpha subfamily of laminin chains and is a major component of basement membranes. Two transcript variants encoding different isoforms have been found for this gene, but the full-length nature of one of them has not been determined. [provided by RefSeq]

Other Designations laminin alpha 5|laminin alpha-5 chain

Pathway

- [ECM-receptor interaction](#)

- [Focal adhesion](#)
- [Pathways in cancer](#)
- [Small cell lung cancer](#)

Disease

- [Cardiovascular Diseases](#)
- [Diabetes Mellitus](#)
- [Edema](#)