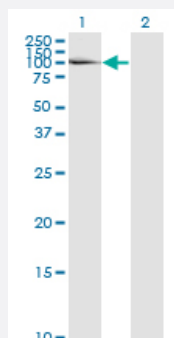


LAMA5 monoclonal antibody (M01), clone 2F7

Catalog # H00003911-M01

Size 100 ug

Applications

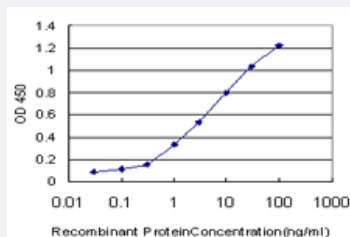


Western Blot (Transfected lysate)

Western Blot analysis of LAMA5 expression in transfected 293T cell line by LAMA5 monoclonal antibody (M01), clone 2F7.

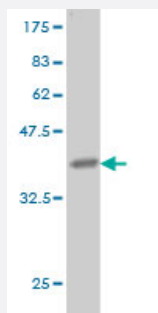
Lane 1: LAMA5 transfected lysate (74 KDa).

Lane 2: Non-transfected lysate.



Sandwich ELISA (Recombinant protein)

Detection limit for recombinant GST tagged LAMA5 is approximately 0.03 ng/ml as a capture antibody.



Western Blot detection against Immunogen (36.63 KDa) .

Specification

Product Description

Mouse monoclonal antibody raised against a partial recombinant LAMA5.

Immunogen	LAMA5 (AAH03355.1, 1 a.a. ~ 100 a.a) partial recombinant protein with GST tag. MW of the GST tag alone is 26 KDa.
Sequence	MGVSLRDKKVHWVYQLGEAGPAVLSIDEDIGEQFAAVSLDRTLQFGHMSVTVERQMIQETKGDT VAPGAEGLLNLRPDDFVFYVGGYPSTFTPPPLLRF
Host	Mouse
Reactivity	Human
Isotype	IgG1 Kappa
Quality Control Testing	Antibody Reactive Against Recombinant Protein. Western Blot detection against Immunogen (36.63 KDa) .
Storage Buffer	In 1x PBS, pH 7.4
Storage Instruction	Store at -20°C or lower. Aliquot to avoid repeated freezing and thawing.

Applications

- Western Blot (Transfected lysate)

Western Blot analysis of LAMA5 expression in transfected 293T cell line by LAMA5 monoclonal antibody (M01), clone 2F7.

Lane 1: LAMA5 transfected lysate(74 KDa).

Lane 2: Non-transfected lysate.

[Protocol Download](#)

- Western Blot (Recombinant protein)

[Protocol Download](#)

- Sandwich ELISA (Recombinant protein)

Detection limit for recombinant GST tagged LAMA5 is approximately 0.03ng/ml as a capture antibody.

[Protocol Download](#)

- ELISA

Gene Info — LAMA5

Entrez GeneID [3911](#)

GeneBank Accession# [BC003355](#)

Protein Accession#	AAH03355.1
Gene Name	LAMA5
Gene Alias	KIAA1907
Gene Description	laminin, alpha 5
Omim ID	601033
Gene Ontology	Hyperlink
Gene Summary	<p>Components of the extracellular matrix exert myriad effects on tissues throughout the body. In particular, the laminins, a family of heterotrimeric extracellular glycoproteins, affect tissue development and integrity in such diverse organs as the kidney, lung, skin, and nervous system. It is thought that laminins mediate the attachment, migration, and organization of cells into tissues during embryonic development by interacting with other extracellular matrix components. Laminins function as heterotrimeric complexes of alpha, beta, and gamma chains, with each chain type representing a different subfamily of proteins. The protein encoded by this gene belongs to the alpha subfamily of laminin chains and is a major component of basement membranes. Two transcript variants encoding different isoforms have been found for this gene, but the full-length nature of one of them has not been determined. [provided by RefSeq]</p>
Other Designations	laminin alpha 5 laminin alpha-5 chain

Publication Reference

- [Photoreceptor laminin drives differentiation of human pluripotent stem cells to photoreceptor progenitors that partially restore retina function.](#)

Hwee Goon Tay, Helder Andre, Vicki Chrysostomou, Swarnaseetha Adusumalli, Jing Guo, Xiaoyuan Ren, Wei Sheng Tan, Jia En Tor, Aida Moreno-Moral, Flavia Plastino, Hammurabi Bartuma, Zuhua Cai, Sai Bo Bo Tun, Veluchamy Amutha Barathi, Gavin Tan Siew Wei, Gianluca Greci, Li Yen Chong, Arne Holmgren, Anders Kvanta, Crowston Jonathan Guy, Enrico Petretto, Karl Tryggvason.

Molecular Therapy 2023 Jan; S1525-0016(22):00716-X.

Application: WB-Ce, Human, HKE293 cells

- [Genome-wide Runx2 occupancy in prostate cancer cells suggests a role in regulating secretion.](#)

Little GH, Noushmehr H, Baniwal SK, Berman BP, Coetzee GA, Frenkel B.

Nucleic Acids Research 2011 Dec; 40(8):3538.

Application: WB, Human, C4-2B/Rx2dox

- [Melanoma cells produce multiple laminin isoforms and strongly migrate on ?5 laminin\(s\) via several integrin receptors.](#)

Oikawa Y, Hansson J, Sasaki T, Rousselle P, Domogatskaya A, Rodin S, Tryggvason K, Patarroyo M.

Experimental Cell Research 2011 May; 317(8):1119.

Application: IHC, Human, Melanoma tumor

- [Proteomics Analysis of Nasopharyngeal Carcinoma Cell Secretome Using a Hollow Fiber Culture System and Mass Spectrometry.](#)

Wu HY, Chang YH, Chang YC, Liao PC.

Journal of Proteome Research 2008 Nov; 8(1):380.

Application: WB, Human, Nasopharyngeal carcinoma cell line NPC-TW04

- [Proteomic analysis of platelet a-granules using mass spectrometry.](#)

Maynard DM, Heijnen HF, Horne MK, White JG, Gahl WA.

Journal of Thrombosis and Haemostasis 2007 Jul; 5(9):1945.

Application: IEM, Human, Platelets from healthy donors

Pathway

- [ECM-receptor interaction](#)
- [Focal adhesion](#)
- [Pathways in cancer](#)
- [Small cell lung cancer](#)

Disease

- [Cardiovascular Diseases](#)
- [Diabetes Mellitus](#)
- [Edema](#)