

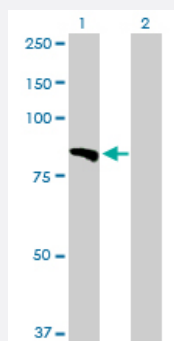
MaxPab®

LAMA5 purified MaxPab rabbit polyclonal antibody (D01P)

Catalog # H00003911-D01P

Size 100 ug

Applications

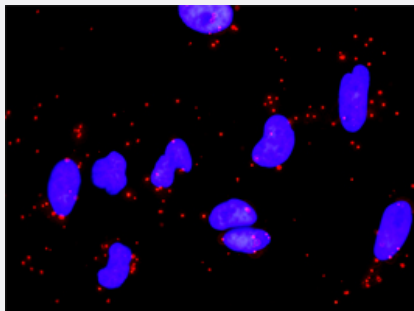


Western Blot (Transfected lysate)

Western Blot analysis of LAMA5 expression in transfected 293T cell line ([H00003911-T01](#)) by LAMA5 MaxPab polyclonal antibody.

Lane 1: LAMA5 transfected lysate(74.00 KDa).

Lane 2: Non-transfected lysate.



In situ Proximity Ligation Assay (Cell)

Proximity Ligation Analysis of protein-protein interactions between LAMA5 and LAMC1. HeLa cells were stained with anti-LAMA5 rabbit purified polyclonal 1:1200 and anti-LAMC1 mouse monoclonal antibody 1:50. Each red dot represents the detection of protein-protein interaction complex, and nuclei were counterstained with DAPI (blue).

Specification

Product Description

Rabbit polyclonal antibody raised against a full-length human LAMA5 protein.

Immunogen

LAMA5 (AAH03355.1, 1 a.a. ~ 670 a.a) full-length human protein.

Sequence

MGVSLRDKKVHVYQLGEAGPAVLSIDEDIGEQAFAVSLDRTLQFGHMSVTVRQMIQETKGD
 VAPGAEGLLNLRPDDFVFYVGGYPSTFTPPPLLRFPGYRGCIEMDTLNEEVVSLYNFERTFQLDTA
 VDRPCARSKSTGDPWLTGSGYLDGTGFARISFDSQISTTKRFEQELRLVSYSGVLFFLKQQIQVFL
 LGGSRKRVLRVERATVYSVEQDNDLEADAYLGGVPPDQLPPSLRRLFPTGGSVRGCVKGIK
 ALGKYVDLKRLLNTTGVSAAGCTADLLVGRAMTFHGHGFLRLALSNAVPLTGNVYSGFGFHSQAQDS
 ALLYYRASPDGLCQVSLQQGRVSLQLLRTEVKTOAGFADGAPHYVAFYSNATGVWLYVDDQLQQ
 MKPHRGPPPELQPPQEGPPRLLGLPESGTYNFGSCISNVFVQRLLGPQRVFDLQQNLGSVNV
 STGCAPALQAQTPGLGPRGLQATARKASRRSRQPARHPACMLPPLHRTTRDSYQFGGSLSSH
 EFVGILARHRNWPSLSMHVLPRSSRGLLLFTARLRPGSPSLALFLSNGHFVAQMEGLGTRLRAQS
 RQRSRPGRWHKVSVRWEKNRILLVTDGARAWSQEGPHRQHQAHPQHTLFGGLPASSHS
 SKLPTSQELHCLMWAWNWRCGPWQSPD

Host

Rabbit

Reactivity

Human

Quality Control Testing

Antibody reactive against mammalian transfected lysate.

Storage Buffer

In 1x PBS, pH 7.4

Storage Instruction

Store at -20°C or lower. Aliquot to avoid repeated freezing and thawing.

Applications

Western Blot (Transfected lysate)

Western Blot analysis of LAMA5 expression in transfected 293T cell line ([H00003911-T01](#)) by LAMA5 MaxPab polyclonal antibody.

Lane 1: LAMA5 transfected lysate(74.00 KDa).
 Lane 2: Non-transfected lysate.

[Protocol Download](#)

In situ Proximity Ligation Assay (Cell)

Proximity Ligation Analysis of protein-protein interactions between LAMA5 and LAMC1. HeLa cells were stained with anti-LAMA5 rabbit purified polyclonal 1:1200 and anti-LAMC1 mouse monoclonal antibody 1:50. Each red dot represents the detection of protein-protein interaction complex, and nuclei were counterstained with DAPI (blue).

Gene Info — LAMA5

Entrez GeneID

[3911](#)

GeneBank Accession#

[BC003355.1](#)

Protein Accession#

[AAH03355.1](#)

Gene Name	LAMA5
Gene Alias	KIAA1907
Gene Description	laminin, alpha 5
Omim ID	601033
Gene Ontology	Hyperlink
Gene Summary	<p>Components of the extracellular matrix exert myriad effects on tissues throughout the body. In particular, the laminins, a family of heterotrimeric extracellular glycoproteins, affect tissue development and integrity in such diverse organs as the kidney, lung, skin, and nervous system. It is thought that laminins mediate the attachment, migration, and organization of cells into tissues during embryonic development by interacting with other extracellular matrix components. Laminins function as heterotrimeric complexes of alpha, beta, and gamma chains, with each chain type representing a different subfamily of proteins. The protein encoded by this gene belongs to the alpha subfamily of laminin chains and is a major component of basement membranes. Two transcript variants encoding different isoforms have been found for this gene, but the full-length nature of one of them has not been determined. [provided by RefSeq]</p>
Other Designations	laminin alpha 5 laminin alpha-5 chain

Pathway

- [ECM-receptor interaction](#)
- [Focal adhesion](#)
- [Pathways in cancer](#)
- [Small cell lung cancer](#)

Disease

- [Cardiovascular Diseases](#)
- [Diabetes Mellitus](#)
- [Edema](#)