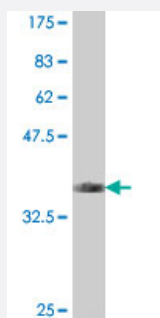


# LAMA5 polyclonal antibody (A01)

Catalog # H00003911-A01

Size 50 uL

## Applications



Western Blot detection against Immunogen (37 KDa) .

## Specification

<b>Product Description</b>	Mouse polyclonal antibody raised against a partial recombinant LAMA5.
<b>Immunogen</b>	LAMA5 (AAH03355, 1 a.a. ~ 100 a.a) partial recombinant protein with GST tag.
<b>Sequence</b>	MGVSLRDKKVHWVYQLGEAGPAVLSDIDIGEQFAAVSLDRTLQFGHMSVTVRQMIQETKGDT VAPGAEGLLNLRPDDFVFYVGGYPSTFTPPPLLRFP
<b>Host</b>	Mouse
<b>Reactivity</b>	Human
<b>Quality Control Testing</b>	Antibody Reactive Against Recombinant Protein. Western Blot detection against Immunogen (37 KDa) .
<b>Storage Buffer</b>	50 % glycerol
<b>Storage Instruction</b>	Store at -20°C or lower. Aliquot to avoid repeated freezing and thawing.

## Applications

- Western Blot (Recombinant protein)

[Protocol Download](#)

- ELISA

## Gene Info — LAMA5

Entrez GeneID [3911](#)

GeneBank Accession# [BC003355](#)

Protein Accession# [AAH03355](#)

Gene Name LAMA5

Gene Alias KIAA1907

Gene Description laminin, alpha 5

Omim ID [601033](#)

Gene Ontology [Hyperlink](#)

**Gene Summary**

Components of the extracellular matrix exert myriad effects on tissues throughout the body. In particular, the laminins, a family of heterotrimeric extracellular glycoproteins, affect tissue development and integrity in such diverse organs as the kidney, lung, skin, and nervous system. It is thought that laminins mediate the attachment, migration, and organization of cells into tissues during embryonic development by interacting with other extracellular matrix components. Laminins function as heterotrimeric complexes of alpha, beta, and gamma chains, with each chain type representing a different subfamily of proteins. The protein encoded by this gene belongs to the alpha subfamily of laminin chains and is a major component of basement membranes. Two transcript variants encoding different isoforms have been found for this gene, but the full-length nature of one of them has not been determined. [provided by RefSeq]

**Other Designations** laminin alpha 5|laminin alpha-5 chain

## Publication Reference

- [Polymerized laminin-332 matrix supports rapid and tight adhesion of keratinocytes, suppressing cell migration.](#)

Kariya Y, Sato H, Katou N, Kariya Y, Miyazaki K.

PLoS One 2012 May; 7(5):e35546.

Application: WB, Human, HEK 293 cells

## Pathway

- [ECM-receptor interaction](#)
- [Focal adhesion](#)
- [Pathways in cancer](#)
- [Small cell lung cancer](#)

## Disease

- [Cardiovascular Diseases](#)
- [Diabetes Mellitus](#)
- [Edema](#)