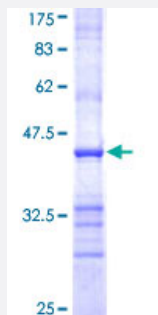


LALBA (Human) Recombinant Protein (Q01)

Catalog # H00003906-Q01

Size 25 ug, 10 ug

Applications



Specification

Product Description	Human LALBA partial ORF (NP_002280, 33 a.a. - 142 a.a.) recombinant protein with GST-tag at N-terminal.
Sequence	DIDGYGGIALPELICTMFHTSGYDTQAIVENNESTEYGLFQISNKLWCKSSQVPQSRNICDISCDKFL DDITDDIMCAKKILDIKGIDYWLAHKALCTEKLQWLCEKL
Host	Wheat Germ (in vitro)
Theoretical MW (kDa)	37.84
Interspecies Antigen Sequence	Mouse (72); Rat (74)
Preparation Method	in vitro wheat germ expression system
Purification	Glutathione Sepharose 4 Fast Flow
Quality Control Testing	12.5% SDS-PAGE Stained with Coomassie Blue.
Storage Buffer	50 mM Tris-HCl, 10 mM reduced Glutathione, pH=8.0 in the elution buffer.
Storage Instruction	Store at -80°C. Aliquot to avoid repeated freezing and thawing.
Note	Best use within three months from the date of receipt of this protein.

Applications

- Enzyme-linked Immunoabsorbent Assay
- Western Blot (Recombinant protein)
- Antibody Production
- Protein Array

Gene Info — LALBA

Entrez GeneID [3906](#)

GeneBank Accession# [NM_002289](#)

Protein Accession# [NP_002280](#)

Gene Name LALBA

Gene Alias MGC138521, MGC138523

Gene Description lactalbumin, alpha-

Omim ID [149750](#)

Gene Ontology [Hyperlink](#)

Gene Summary This gene encodes alpha-lactalbumin, a principal protein of milk. Alpha-lactalbumin forms the regulatory subunit of the lactose synthase (LS) heterodimer and beta 1,4-galactosyltransferase (beta 4Gal-T1) forms the catalytic component. Together, these proteins enable LS to produce lactose by transferring galactose moieties to glucose. As a monomer, alpha-lactalbumin strongly binds calcium and zinc ions and may possess bactericidal or antitumor activity. A folding variant of alpha-lactalbumin, called HAMLET, likely induces apoptosis in tumor and immature cells. [provided by RefSeq]

Other Designations lactose synthase B protein

Pathway

- [Galactose metabolism](#)