

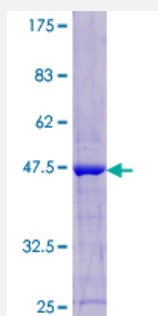
Full-Length

LAIR2 (Human) Recombinant Protein (P01)

Catalog # H00003904-P01

Size 10 ug, 25 ug

Applications



Specification

Product Description	Human LAIR2 full-length ORF (NP_002279.2, 1 a.a. - 152 a.a.) recombinant protein with GST-tag at N-terminal.
Sequence	MSPHLTALLGLVLCLAQTIHTQEGALPRPSISAEPGTVISPGSHVTFMCRGPVGVQTFRLEREDRA KYKDSYNVFRLLGPSESEARFHIDSVSEGNAGLYRCLYKPPGWSEHSDFLELLVKESSGGPDSP DTEPGSSAGTVPGTEASGFDAP
Host	Wheat Germ (in vitro)
Theoretical MW (kDa)	42.7
Preparation Method	in vitro wheat germ expression system
Purification	Glutathione Sepharose 4 Fast Flow
Quality Control Testing	12.5% SDS-PAGE Stained with Coomassie Blue.
Storage Buffer	50 mM Tris-HCl, 10 mM reduced Glutathione, pH=8.0 in the elution buffer.
Storage Instruction	Store at -80°C. Aliquot to avoid repeated freezing and thawing.
Note	Best use within three months from the date of receipt of this protein.

Applications

- Enzyme-linked Immunoabsorbent Assay
- Western Blot (Recombinant protein)
- Antibody Production
- Protein Array

Gene Info — LAIR2

Entrez GeneID [3904](#)

GeneBank Accession# [NM_002288.3](#)

Protein Accession# [NP_002279.2](#)

Gene Name LAIR2

Gene Alias CD306, MGC71634

Gene Description leukocyte-associated immunoglobulin-like receptor 2

Omim ID [602993](#)

Gene Ontology [Hyperlink](#)

Gene Summary The protein encoded by this gene is a member of the immunoglobulin superfamily. It was identified by its similarity to LAIR1, an inhibitory receptor present on mononuclear leukocytes. This gene maps to a region of 19q13.4, termed the leukocyte receptor cluster, which contains 29 genes in the immunoglobulin superfamily, including LAIR1. The function of this protein is unknown, although it is thought to be secreted and may help modulate mucosal tolerance. Two transcript variants encoding different isoforms have been found for this gene. [provided by RefSeq]

Other Designations leukocyte-associated Ig-like receptor 2|leukocyte-associated Ig-like receptor-2