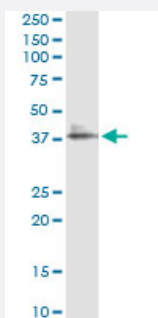


# LAIR1 (Human) IP-WB Antibody Pair

Catalog # H00003903-PW1

Size 1 Set

## Applications



Immunoprecipitation of LAIR1 transfected lysate using mouse monoclonal anti-LAIR1 and Protein A Magnetic Bead ([U0007](#)), and immunoblotted with rabbit polyclonal anti-LAIR1.

## Specification

<b>Product Description</b>	This IP-WB antibody pair set comes with one antibody for immunoprecipitation and another to detect the precipitated protein in western blot.
<b>Reactivity</b>	Human
<b>Quality Control Testing</b>	Immunoprecipitation-Western Blot (IP-WB) Immunoprecipitation of LAIR1 transfected lysate using mouse monoclonal anti-LAIR1 and Protein A Magnetic Bead ( <a href="#">U0007</a> ), and immunoblotted with rabbit polyclonal anti-LAIR1.
<b>Supplied Product</b>	Antibody pair set content: 1. Antibody pair for IP: mouse monoclonal anti-LAIR1 (300 ug) 2. Antibody pair for WB: rabbit polyclonal anti-LAIR1 (50 ul)
<b>Storage Instruction</b>	Store reagents of the antibody pair set at -20°C or lower. Please aliquot to avoid repeated freeze thaw cycle. Reagents should be returned to -20°C storage immediately after use.

## Applications

- Immunoprecipitation-Western Blot

[Protocol Download](#)

## Gene Info — LAIR1

**Entrez GeneID** [3903](#)**Gene Name** LAIR1**Gene Alias** CD305, LAIR-1**Gene Description** leukocyte-associated immunoglobulin-like receptor 1**Omim ID** [602992](#)**Gene Ontology** [Hyperlink](#)

**Gene Summary**

The protein encoded by this gene is an inhibitory receptor found on peripheral mononuclear cells, including NK cells, T cells, and B cells. Inhibitory receptors regulate the immune response to prevent lysis of cells recognized as self. The gene is a member of both the immunoglobulin superfamily and the leukocyte-associated inhibitory receptor family. The gene maps to a region of 19q13.4 called the leukocyte receptor cluster, which contains at least 29 genes encoding leukocyte-expressed receptors of the immunoglobulin superfamily. [provided by RefSeq]

**Other Designations** leukocyte-associated Ig-like receptor 1