

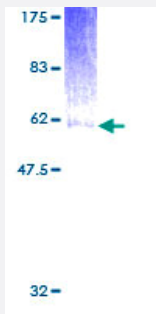
Full-Length

LAIR1 (Human) Recombinant Protein (P01)

Catalog # H00003903-P01

Size 25 ug, 10 ug

Applications



Specification

Product Description

Human LAIR1 full-length ORF (AAH27899, 1 a.a. - 287 a.a.) recombinant protein with GST-tag at N-terminal.

Sequence

MSPHPTALLGLVLCIAQTIHTQEEDLPRPSISAEPGTVIPLGSHVTFVCRGPVGVQTFRLERESRS
TYNDTEDVSQASPSESEARFRIDSVSEGNAGPYRCIYKPPKWSEQSDYLELLVKETSGGPDSP
DTEPGSSAGPTQRPSDNSHNEHAPASQGLKAEHLYLIGSVVFLFCLLLLVLFLHRQNQIKQGP
PRSKDEEQKPPQRPDLAVDLERTADKATVNLPEKDRETDTSALAAGSSQEVTYAQLDHWAL
TQRTARAVSPQSTKPMASITYAAVARH

Host

Wheat Germ (in vitro)

Theoretical MW (kDa)

57.31

Preparation Method

[in vitro wheat germ expression system](#)

Purification

Glutathione Sepharose 4 Fast Flow

Quality Control Testing

12.5% SDS-PAGE Stained with Coomassie Blue.

Storage Buffer

50 mM Tris-HCl, 10 mM reduced Glutathione, pH=8.0 in the elution buffer.

Storage Instruction

Store at -80°C. Aliquot to avoid repeated freezing and thawing.

Note

Best use within three months from the date of receipt of this protein.

Applications

- Enzyme-linked Immunoabsorbent Assay
- Western Blot (Recombinant protein)
- Antibody Production
- Protein Array

Gene Info — LAIR1

Entrez GeneID [3903](#)

GeneBank Accession# [BC027899](#)

Protein Accession# [AAH27899](#)

Gene Name LAIR1

Gene Alias CD305, LAIR-1

Gene Description leukocyte-associated immunoglobulin-like receptor 1

Omim ID [602992](#)

Gene Ontology [Hyperlink](#)

Gene Summary The protein encoded by this gene is an inhibitory receptor found on peripheral mononuclear cells, including NK cells, T cells, and B cells. Inhibitory receptors regulate the immune response to prevent lysis of cells recognized as self. The gene is a member of both the immunoglobulin superfamily and the leukocyte-associated inhibitory receptor family. The gene maps to a region of 19q13.4 called the leukocyte receptor cluster, which contains at least 29 genes encoding leukocyte-expressed receptors of the immunoglobulin superfamily. [provided by RefSeq]

Other Designations leukocyte-associated Ig-like receptor 1