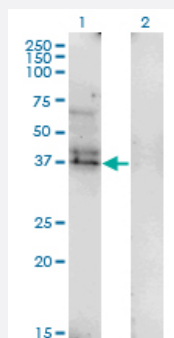


LAIR1 monoclonal antibody (M01), clone 2G4

Catalog # H00003903-M01

Size 100 ug

Applications

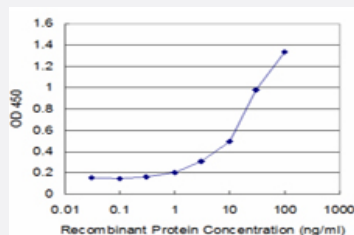


Western Blot (Transfected lysate)

Western Blot analysis of LAIR1 expression in transfected 293T cell line by LAIR1 monoclonal antibody (M01), clone 2G4.

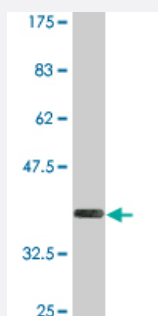
Lane 1: LAIR1 transfected lysate(31.4 KDa).

Lane 2: Non-transfected lysate.



Sandwich ELISA (Recombinant protein)

Detection limit for recombinant GST tagged LAIR1 is approximately 1ng/ml as a capture antibody.



Western Blot detection against Immunogen (36.74 KDa) .

Specification

Product Description

Mouse monoclonal antibody raised against a partial recombinant LAIR1.

Immunogen	LAIR1 (NP_002278.1, 188 a.a. ~ 287 a.a) partial recombinant protein with GST tag. MW of the GST tag alone is 26 KDa.
Sequence	RQNQIKQGPPRSKDDEEQKPQQRPDLAVDVLERTADKATVNGLPEKDRETDTSALAAGSSQEVTY AQLDHWALTQRTARAVSPQSTKPMASITYAAVARH
Host	Mouse
Reactivity	Human
Isotype	IgG2a Kappa
Quality Control Testing	Antibody Reactive Against Recombinant Protein. Western Blot detection against Immunogen (36.74 KDa) .
Storage Buffer	In 1x PBS, pH 7.4
Storage Instruction	Store at -20°C or lower. Aliquot to avoid repeated freezing and thawing.

Applications

- Western Blot (Transfected lysate)

Western Blot analysis of LAIR1 expression in transfected 293T cell line by LAIR1 monoclonal antibody (M01), clone 2G4.

Lane 1: LAIR1 transfected lysate(31.4 KDa).

Lane 2: Non-transfected lysate.

[Protocol Download](#)

- Western Blot (Recombinant protein)

[Protocol Download](#)

- Sandwich ELISA (Recombinant protein)

Detection limit for recombinant GST tagged LAIR1 is approximately 1ng/ml as a capture antibody.

[Protocol Download](#)

- ELISA

Gene Info — LAIR1

Entrez GeneID [3903](#)

GeneBank Accession# [NM_002287](#)

Protein Accession#	NP_002278.1
Gene Name	LAIR1
Gene Alias	CD305, LAIR-1
Gene Description	leukocyte-associated immunoglobulin-like receptor 1
Omim ID	602992
Gene Ontology	Hyperlink
Gene Summary	<p>The protein encoded by this gene is an inhibitory receptor found on peripheral mononuclear cells, including NK cells, T cells, and B cells. Inhibitory receptors regulate the immune response to prevent lysis of cells recognized as self. The gene is a member of both the immunoglobulin superfamily and the leukocyte-associated inhibitory receptor family. The gene maps to a region of 19q13.4 called the leukocyte receptor cluster, which contains at least 29 genes encoding leukocyte-expressed receptors of the immunoglobulin superfamily. [provided by RefSeq]</p>
Other Designations	leukocyte-associated Ig-like receptor 1