

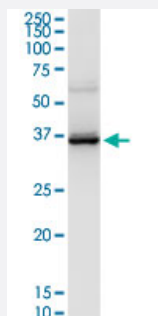
MaxPab®

LAIR1 purified MaxPab rabbit polyclonal antibody (D01P)

Catalog # H00003903-D01P

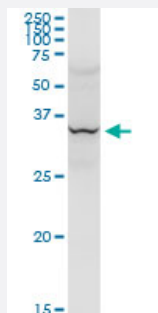
Size 100 ug

Applications



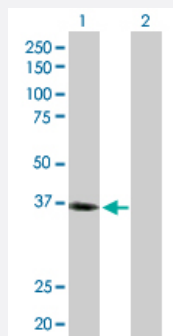
Western Blot (Tissue lysate)

LAIR1 MaxPab rabbit polyclonal antibody. Western Blot analysis of LAIR1 expression in mouse liver.



Western Blot (Tissue lysate)

LAIR1 MaxPab rabbit polyclonal antibody. Western Blot analysis of LAIR1 expression in human liver.



Western Blot (Transfected lysate)

Western Blot analysis of LAIR1 expression in transfected 293T cell line ([H00003903-T01](#)) by LAIR1 MaxPab polyclonal antibody.

Lane 1: LAIR1 transfected lysate(31.68 KDa).

Lane 2: Non-transfected lysate.

Specification

Product Description

Rabbit polyclonal antibody raised against a full-length human LAIR1 protein.

Immunogen	LAIR1 (AAH27899, 1 a.a. ~ 287 a.a) full-length human protein.
Sequence	MSPHPTALLGLVLCLAQTIHTQEEDLPRPSISAEPGTVIPLGSHVTFVCRGPVGVQTFRLERESRS TYNDTEDVSQASPSESEARFRIDSVSEGNAGPYRCIYYKPPKWSEQSDYLELLVKETSGGPDSP DTEPGSSAGPTQRPSDNSHNEHAPASQGLKAEHLYLIGVSVVFLFCLLLLVLFLCLHRQNQIKQGP PRSKDEEQKPQQRPD LAVDVLERTADKATVNGLPEKDRETDT SALAAGSSQEVTYAQLDHWAL TQRTARAVSPQSTKPMASITYAAVARH
Host	Rabbit
Reactivity	Human, Mouse
Quality Control Testing	Antibody reactive against mammalian transfected lysate.
Storage Buffer	In 1x PBS, pH 7.4
Storage Instruction	Store at -20°C or lower. Aliquot to avoid repeated freezing and thawing.

Applications

- Western Blot (Tissue lysate)

LAIR1 MaxPab rabbit polyclonal antibody. Western Blot analysis of LAIR1 expression in mouse liver.

[Protocol Download](#)

- Western Blot (Tissue lysate)

LAIR1 MaxPab rabbit polyclonal antibody. Western Blot analysis of LAIR1 expression in human liver.

[Protocol Download](#)

- Western Blot (Transfected lysate)

Western Blot analysis of LAIR1 expression in transfected 293T cell line ([H00003903-T01](#)) by LAIR1 MaxPab polyclonal antibody.

Lane 1: LAIR1 transfected lysate(31.68 KDa).

Lane 2: Non-transfected lysate.

[Protocol Download](#)

Gene Info — LAIR1

Entrez GeneID [3903](#)

GeneBank Accession# [BC027899](#)

Protein Accession#	AAH27899
Gene Name	LAIR1
Gene Alias	CD305, LAIR-1
Gene Description	leukocyte-associated immunoglobulin-like receptor 1
Omim ID	602992
Gene Ontology	Hyperlink
Gene Summary	<p>The protein encoded by this gene is an inhibitory receptor found on peripheral mononuclear cells, including NK cells, T cells, and B cells. Inhibitory receptors regulate the immune response to prevent lysis of cells recognized as self. The gene is a member of both the immunoglobulin superfamily and the leukocyte-associated inhibitory receptor family. The gene maps to a region of 19q13.4 called the leukocyte receptor cluster, which contains at least 29 genes encoding leukocyte-expressed receptors of the immunoglobulin superfamily. [provided by RefSeq]</p>
Other Designations	leukocyte-associated Ig-like receptor 1