

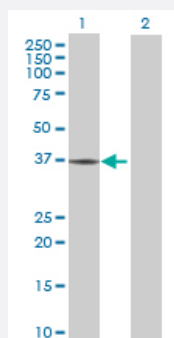
MaxPab®

LAIR1 MaxPab mouse polyclonal antibody (B02P)

Catalog # H00003903-B02P

Size 50 ug

Applications



Western Blot (Transfected lysate)

Western Blot analysis of LAIR1 expression in transfected 293T cell line ([H00003903-T02](#)) by LAIR1 MaxPab polyclonal antibody.

Lane 1: LAIR1 transfected lysate(31.57 KDa).

Lane 2: Non-transfected lysate.

Specification

Product Description

Mouse polyclonal antibody raised against a full-length human LAIR1 protein.

Immunogen

LAIR1 (NP_002278.1, 1 a.a. ~ 287 a.a) full-length human protein.

Sequence

MSPHPTALLGLVLCLAQTIHTQEEDLPRPSISAEPGTVIPLGSHVTFVCRGPVGVQTFRLERESRS
TYNDTEDVSQASPSESEARFRIDSVSEGNAGPYRCIYYKPPKWSEQSDYLELLVKETSGGPDSP
DTEPGSSAGPTQRPSDNSHNEHAPASQGLKAEHLYLIGVSVVFLFCLLLLVLFLCLHRQNQIKQGP
PRSKDEEQKPQQRPDLAVDVLERTADKATVNGLPKEDRETDTSALAAGSSQEVTYAQLDHWAL
TQRTARAVSPQSTKPMASITYAAVARH

Host

Mouse

Reactivity

Human

Quality Control Testing

Antibody reactive against mammalian transfected lysate.

Storage Buffer

In 1x PBS, pH 7.4

Storage Instruction

Store at -20°C or lower. Aliquot to avoid repeated freezing and thawing.

Applications

- Western Blot (Transfected lysate)

Western Blot analysis of LAIR1 expression in transfected 293T cell line ([H00003903-T02](#)) by LAIR1 MaxPab polyclonal antibody.

Lane 1: LAIR1 transfected lysate(31.57 KDa).

Lane 2: Non-transfected lysate.

[Protocol Download](#)

Gene Info — LAIR1

Entrez GeneID	3903
---------------	----------------------

GeneBank Accession#	NM_002287.3
---------------------	-----------------------------

Protein Accession#	NP_002278.1
--------------------	-----------------------------

Gene Name	LAIR1
-----------	-------

Gene Alias	CD305, LAIR-1
------------	---------------

Gene Description	leukocyte-associated immunoglobulin-like receptor 1
------------------	---

Omim ID	602992
---------	------------------------

Gene Ontology	Hyperlink
---------------	---------------------------

Gene Summary	The protein encoded by this gene is an inhibitory receptor found on peripheral mononuclear cells, including NK cells, T cells, and B cells. Inhibitory receptors regulate the immune response to prevent lysis of cells recognized as self. The gene is a member of both the immunoglobulin superfamily and the leukocyte-associated inhibitory receptor family. The gene maps to a region of 19q13.4 called the leukocyte receptor cluster, which contains at least 29 genes encoding leukocyte-expressed receptors of the immunoglobulin superfamily. [provided by RefSeq]
--------------	--

Other Designations	leukocyte-associated Ig-like receptor 1
--------------------	---