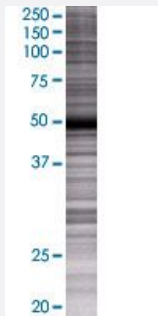


# KRT83 293T Cell Transient Overexpression Lysate(Denatured)

Catalog # H00003889-T01

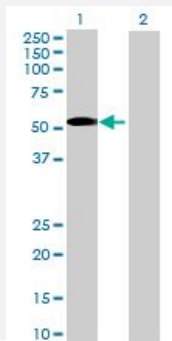
Size 100 uL

## Applications



### SDS-PAGE Gel

KRT83 transfected lysate.



### Western Blot

Lane 1: KRT83 transfected lysate ( 54.34 KDa)

Lane 2: Non-transfected lysate.

## Specification

Transfected Cell Line	293T
Plasmid	pCMV-KRT83 full-length
Host	Human
Theoretical MW (kDa)	54.34
Interspecies Antigen Sequence	Mouse (88)

## Quality Control Testing

Transient overexpression cell lysate was tested with Anti-KRT83 antibody ([H00003889-B01](#)) by Western Blots.  
 SDS-PAGE Gel  
 KRT83 transfected lysate.  
 Western Blot  
 Lane 1: KRT83 transfected lysate ( 54.34 KDa)  
 Lane 2: Non-transfected lysate.

## Storage Buffer

1X Sample Buffer (50 mM Tris-HCl, 2% SDS, 10% glycerol, 300 mM 2-mercaptoethanol, 0.01% Bromophenol blue)

## Storage Instruction

Store at -80°C. Aliquot to avoid repeated freezing and thawing.

## Applications

- Western Blot

## Gene Info — KRT83

### Entrez GeneID

[3889](#)

### GeneBank Accession#

[BC069546.1](#)

### Protein Accession#

[AAH69546.1](#)

### Gene Name

KRT83

### Gene Alias

HB3, Hb-3, KRTHB3, MGC141663

### Gene Description

keratin 83

### Omim ID

[158000 602765](#)

### Gene Ontology

[Hyperlink](#)

### Gene Summary

The protein encoded by this gene is a member of the keratin gene family. As a type II hair keratin, it is a basic protein which heterodimerizes with type I keratins to form hair and nails. The type II hair keratins are clustered in a region of chromosome 12q13 and are grouped into two distinct subfamilies based on structure similarity. One subfamily, consisting of KRTHB1, KRTHB3, and KRTHB6, is highly related. The other less-related subfamily includes KRTHB2, KRTHB4, and KRTHB5. All hair keratins are expressed in the hair follicle; this hair keratin, as well as KRTHB1 and KRTHB6, is found primarily in the hair cortex. [provided by RefSeq]

### Other Designations

hHb3|hard keratin, type II, 3|keratin, hair, basic, 3