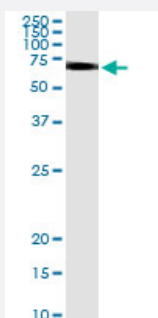


# KRT83 (Human) IP-WB Antibody Pair

Catalog # H00003889-PW1

Size 1 Set

## Applications



Immunoprecipitation of KRT83 transfected lysate using rabbit polyclonal anti-KRT83 and Protein A Magnetic Bead ([U0007](#)), and immunoblotted with mouse purified polyclonal anti-KRT83.

## Specification

<b>Product Description</b>	This IP-WB antibody pair set comes with one antibody for immunoprecipitation and another to detect the precipitated protein in western blot.
<b>Reactivity</b>	Human
<b>Interspecies Antigen Sequence</b>	Mouse (87%); Rat (89%)
<b>Quality Control Testing</b>	Immunoprecipitation-Western Blot (IP-WB) Immunoprecipitation of KRT83 transfected lysate using rabbit polyclonal anti-KRT83 and Protein A Magnetic Bead ( <a href="#">U0007</a> ), and immunoblotted with mouse purified polyclonal anti-KRT83.
<b>Supplied Product</b>	Antibody pair set content: 1. Antibody pair for IP: rabbit polyclonal anti-KRT83 (300 ul) 2. Antibody pair for WB: mouse purified polyclonal anti-KRT83 (50 ug)
<b>Storage Instruction</b>	Store reagents of the antibody pair set at -20°C or lower. Please aliquot to avoid repeated freeze thaw cycle. Reagents should be returned to -20°C storage immediately after use.

## Applications

- Immunoprecipitation-Western Blot

[Protocol Download](#)

## Gene Info — KRT83

**Entrez GeneID** [3889](#)

**Gene Name** KRT83

**Gene Alias** HB3, Hb-3, KRTHB3, MGC141663

**Gene Description** keratin 83

**Omim ID** [158000 602765](#)

**Gene Ontology** [Hyperlink](#)

**Gene Summary** The protein encoded by this gene is a member of the keratin gene family. As a type II hair keratin, it is a basic protein which heterodimerizes with type I keratins to form hair and nails. The type II hair keratins are clustered in a region of chromosome 12q13 and are grouped into two distinct subfamilies based on structure similarity. One subfamily, consisting of KRTHB1, KRTHB3, and KRTHB6, is highly related. The other less-related subfamily includes KRTHB2, KRTHB4, and KRTHB5. All hair keratins are expressed in the hair follicle; this hair keratin, as well as KRTHB1 and KRTHB6, is found primarily in the hair cortex. [provided by RefSeq]

**Other Designations** hHb3|hard keratin, type II, 3|keratin, hair, basic, 3