

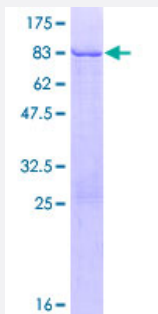
Full-Length

KRT83 (Human) Recombinant Protein (P01)

Catalog # H00003889-P01

Size 10 ug, 25 ug

Applications



Specification

Product Description

Human KRT83 full-length ORF (AAH69546.1, 1 a.a. - 493 a.a.) recombinant protein with GST-tag at N-terminal.

Sequence

MTCGFNSIGCGFRPGNFSCVSACGPRPSRCCITAAPYRGISCYRGLTGGFGSHSVCGGFRAGSC
GRSFGYRSGGVCGPSPPCITTVSVNESLLTPLNLEIDPNAQCVKQEEKEQIKSLNSRFAAFIDKVR
FLEQQNKLLETKLQFYQNRECCQSNLEPLFAGYIETLRREAECVEADSGRLASELNHVQEVLEGY
KKKYEEEEVALRATAENEFVALKKDVEDCAYLRKSDLEANVEALIQEIDFLRRLYEEEIRILQSHISDTS
VVVKLDNSRDLNMDCIVAEIKAQYDDIATRSRAEAESWYRSKCEEMKATVIRHGETLRRTKEEINE
LNRMIQRLTAEVENAKCQNSKLEAAVAQSEQQGEAALSDARCKLAELEGALQKAKQDMACLIRE
YQEVMSKLGLDIEIATYRRLLEGEEQRLCEGVEAVNVCVSSSRGGVVCGLDCVSGSRPVTGSV
CSAPCNGNLVVSTGLCKPCGQLNTTCGGGSCGQGRH

Host

Wheat Germ (in vitro)

Theoretical MW (kDa)

80.6

Interspecies Antigen Sequence

Mouse (88)

Preparation Method

[in vitro wheat germ expression system](#)

Purification

Glutathione Sepharose 4 Fast Flow

Quality Control Testing

12.5% SDS-PAGE Stained with Coomassie Blue.

Storage Buffer	50 mM Tris-HCl, 10 mM reduced Glutathione, pH=8.0 in the elution buffer.
Storage Instruction	Store at -80°C. Aliquot to avoid repeated freezing and thawing.
Note	Best use within three months from the date of receipt of this protein.

Applications

- Enzyme-linked Immunoabsorbent Assay
- Western Blot (Recombinant protein)
- Antibody Production
- Protein Array

Gene Info — KRT83

Entrez GeneID	3889
GeneBank Accession#	BC069546.1
Protein Accession#	AAH69546.1
Gene Name	KRT83
Gene Alias	HB3, Hb-3, KRTHB3, MGC141663
Gene Description	keratin 83
Omim ID	158000 602765
Gene Ontology	Hyperlink
Gene Summary	<p>The protein encoded by this gene is a member of the keratin gene family. As a type II hair keratin, it is a basic protein which heterodimerizes with type I keratins to form hair and nails. The type II hair keratins are clustered in a region of chromosome 12q13 and are grouped into two distinct subfamilies based on structure similarity. One subfamily, consisting of KRTHB1, KRTHB3, and KRTHB6, is highly related. The other less-related subfamily includes KRTHB2, KRTHB4, and KRTHB5. All hair keratins are expressed in the hair follicle; this hair keratin, as well as KRTHB1 and KRTHB6, is found primarily in the hair cortex. [provided by RefSeq]</p>
Other Designations	hHb3 hard keratin, type II, 3 keratin, hair, basic, 3