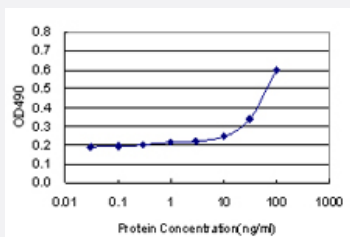


KRT83 (Human) Matched Antibody Pair

Catalog # H00003889-AP21

Size 1 Set

Applications



Sandwich ELISA detection sensitivity ranging from 10 ng/ml to 100 ng/ml.

Specification

Product Description	This antibody pair set comes with a matched antibody pair to detect and quantify the protein level of human KRT83.
Reactivity	Human
Interspecies Antigen Sequence	Mouse (87%); Rat (89%)
Quality Control Testing	Standard curve using recombinant protein (H00003889-P01) as an analyte. Sandwich ELISA detection sensitivity ranging from 10 ng/ml to 100 ng/ml.
Supplied Product	Antibody pair set content: 1. Capture antibody: rabbit MaxPab® affinity purified polyclonal anti-KRT83 (100 ug) 2. Detection antibody: mouse purified polyclonal anti-KRT83 (20 ug) *Reagents are sufficient for at least 1-2 x 96 well plates using recommended protocols.
Storage Instruction	Store reagents of the antibody pair set at -20°C or lower. Please aliquot to avoid repeated freeze thaw cycle. Reagents should be returned to -20°C storage immediately after use.

Applications

- ELISA Pair (Recombinant protein)

[Protocol Download](#)

Gene Info — KRT83

Entrez GeneID [3889](#)

Gene Name KRT83

Gene Alias HB3, Hb-3, KRTHB3, MGC141663

Gene Description keratin 83

Omim ID [158000 602765](#)

Gene Ontology [Hyperlink](#)

Gene Summary The protein encoded by this gene is a member of the keratin gene family. As a type II hair keratin, it is a basic protein which heterodimerizes with type I keratins to form hair and nails. The type II hair keratins are clustered in a region of chromosome 12q13 and are grouped into two distinct subfamilies based on structure similarity. One subfamily, consisting of KRTHB1, KRTHB3, and KRTHB6, is highly related. The other less-related subfamily includes KRTHB2, KRTHB4, and KRTHB5. All hair keratins are expressed in the hair follicle; this hair keratin, as well as KRTHB1 and KRTHB6, is found primarily in the hair cortex. [provided by RefSeq]

Other Designations hHb3|hard keratin, type II, 3|keratin, hair, basic, 3