

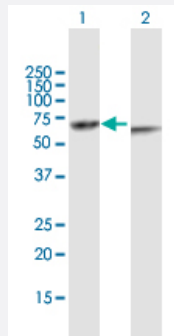
MaxPab®

KRT82 purified MaxPab mouse polyclonal antibody (B01P)

Catalog # H00003888-B01P

Size 50 ug

Applications



Western Blot (Transfected lysate)

Western Blot analysis of KRT82 expression in transfected 293T cell line ([H00003888-T01](#)) by KRT82 MaxPab polyclonal antibody.

Lane 1: KRT82 transfected lysate(56.43 kDa).

Lane 2: Non-transfected lysate.

Specification

Product Description	Mouse polyclonal antibody raised against a full-length human KRT82 protein.
Immunogen	KRT82 (AAI53100.1, 1 a.a. ~ 513 a.a) full-length human protein.
Sequence	MSYHSFQPGSRCGSQSFSSYSVMPRMVTHYAVSKGPCRPGGGRGLRALGCLGSRSLCNVGF GRPRVASRCGGTLPFGFYRLGATCGPSACITPVTINESLLVPLALEIDPTVQVRKRDEKEQIKCLN NRFASFINKVRFLEQKNKLLKTKWNFMQQQRCCQTNIPIFEGYISALRRQLDCVSGDRVRLESEL CSLQAALLEGYKKKYEEELSLRPCVENEFVALKKDVEDTAFLMKADLETNAEALVQEIDFLKSLYEE EICLLQSQISETSVIVKMDNSRELDVDGIAEIKAQYDDIASRSKAEAEAWYQCRYEELRVTAGNHC DNLNRNKNEILEMNKLIQRLQQETENVKAQRCKLEGAIAEAEQQGEAALNDAKCKLAGLEEALQK AKQDMACLLKEYQEVMSKLGDLIEIATYRRLLEGEEHRLCEGIGPVNISVSSSKGAFLYEPGVS TPVLSTGVLRSNGGCSIVGTGELYVPCPEQGLLSCGSGRKSMTLGAGGSSPSHKH
Host	Mouse
Reactivity	Human
Interspecies Antigen Sequence	Mouse (85); Rat (87)
Quality Control Testing	Antibody reactive against mammalian transfected lysate.

Storage Buffer

In 1x PBS, pH 7.4

Storage Instruction

Store at -20°C or lower. Aliquot to avoid repeated freezing and thawing.

Applications

- Western Blot (Transfected lysate)

Western Blot analysis of KRT82 expression in transfected 293T cell line ([H00003888-T01](#)) by KRT82 MaxPab polyclonal antibody.

Lane 1: KRT82 transfected lysate(56.43 KDa).

Lane 2: Non-transfected lysate.

[Protocol Download](#)

Gene Info — KRT82

Entrez GeneID

[3888](#)

GeneBank Accession#

[BC153099.1](#)

Protein Accession#

[AA153100.1](#)

Gene Name

KRT82

Gene Alias

HB2, Hb-2, KRTHB2

Gene Description

keratin 82

Omim ID

[601078](#)

Gene Ontology

[Hyperlink](#)

Gene Summary

The protein encoded by this gene is a member of the keratin gene family. As a type II hair keratin, it is a basic protein which heterodimerizes with type I keratins to form hair and nails. The type II hair keratins are clustered in a region of chromosome 12q13 and are grouped into two distinct subfamilies based on structure similarity. One subfamily, consisting of KRTHB1, KRTHB3, and KRTHB6, is highly related. The other less-related subfamily includes KRTHB2, KRTHB4, and KRTHB5. All hair keratins are expressed in the hair follicle; this keratin appears to be a hair cuticle-specific keratin. [provided by RefSeq]

Other Designations

hard keratin, type II, 2|keratin, hair, basic, 2