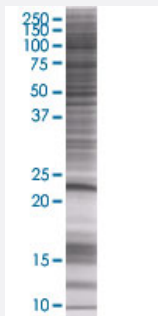


# KRT81 293T Cell Transient Overexpression Lysate(Denatured)

Catalog # H00003887-T01

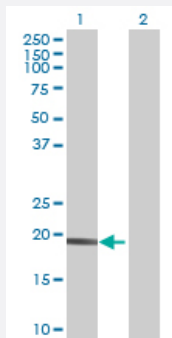
Size 100 uL

## Applications



### SDS-PAGE Gel

KRT81 transfected lysate.



### Western Blot

Lane 1: KRT81 transfected lysate ( 22.33 KDa)

Lane 2: Non-transfected lysate.

## Specification

**Transfected Cell Line** 293T

**Plasmid** pCMV-KRT81 full-length

**Host** Human

**Theoretical MW (kDa)** 22.33

**Quality Control Testing** Transient overexpression cell lysate was tested with Anti-KRT81 antibody ([H00003887-B01](#)) by Western Blots.  
 SDS-PAGE Gel  
 KRT81 transfected lysate.  
 Western Blot  
 Lane 1: KRT81 transfected lysate ( 22.33 KDa)  
 Lane 2: Non-transfected lysate.

<b>Storage Buffer</b>	1X Sample Buffer (50 mM Tris-HCl, 2% SDS, 10% glycerol, 300 mM 2-mercaptoethanol, 0.01% Bromophenol blue)
<b>Storage Instruction</b>	Store at -80°C. Aliquot to avoid repeated freezing and thawing.

## Applications

- Western Blot

## Gene Info — KRT81

<b>Entrez GeneID</b>	<a href="#">3887</a>
<b>GeneBank Accession#</b>	<a href="#">BC021241.2</a>
<b>Protein Accession#</b>	<a href="#">AAH21241.1</a>
<b>Gene Name</b>	KRT81
<b>Gene Alias</b>	HB1, Hb-1, KRTHB1, MLN137, ghHkb1, hHAKB2-1
<b>Gene Description</b>	keratin 81
<b>Omim ID</b>	<a href="#">158000 602153</a>
<b>Gene Ontology</b>	<a href="#">Hyperlink</a>
<b>Gene Summary</b>	<p>The protein encoded by this gene is a member of the keratin gene family. As a type II hair keratin, it is a basic protein which heterodimerizes with type I keratins to form hair and nails. The type II hair keratins are clustered in a region of chromosome 12q13 and are grouped into two distinct subfamilies based on structure similarity. One subfamily, consisting of KRTHB1, KRTHB3, and KRTHB6, is highly related. The other less-related subfamily includes KRTHB2, KRTHB4, and KRTHB5. All hair keratins are expressed in the hair follicle; this hair keratin, as well as KRTHB3 and KRTHB6, is found primarily in the hair cortex. Mutations in this gene and KRTHB6 have been observed in patients with a rare dominant hair disease, monilethrix. [provided by RefSeq]</p>
<b>Other Designations</b>	hard keratin, type II, 1 keratin, hair, basic, 1