

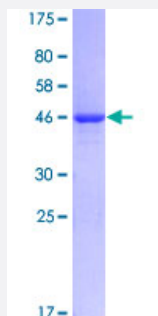
Full-Length

## KRTHB1 (Human) Recombinant Protein (P01)

Catalog # H00003887-P01

Size 25 ug, 10 ug

### Applications



### Specification

<b>Product Description</b>	Human KRTHB1 full-length ORF ( AAH21241, 1 a.a. - 202 a.a.) recombinant protein with GST-tag at N-terminal.
<b>Sequence</b>	MKATVIRHGETLRRTKEEINELNRMQRLTAEVENAKCQNSKLEAAVAQSEQQGEAALSDARCKL AELEGALQKAKQDMACLIREYQEVMSKLGDLIEIATYRRLLEGEEQRLCEGIGAVNVCVSSSRGG VVCGLCVSGSRPVTGVSAPCNGNVAVSTGLCAPCGQLNTTCGGGSCGVGSCGSSSLGVG SCGSSCRKC
<b>Host</b>	Wheat Germ (in vitro)
<b>Theoretical MW (kDa)</b>	47.96
<b>Preparation Method</b>	<a href="#">in vitro wheat germ expression system</a>
<b>Purification</b>	Glutathione Sepharose 4 Fast Flow
<b>Quality Control Testing</b>	12.5% SDS-PAGE Stained with Coomassie Blue.
<b>Storage Buffer</b>	50 mM Tris-HCl, 10 mM reduced Glutathione, pH=8.0 in the elution buffer.
<b>Storage Instruction</b>	Store at -80°C. Aliquot to avoid repeated freezing and thawing.
<b>Note</b>	Best use within three months from the date of receipt of this protein.

## Applications

- Enzyme-linked Immunoabsorbent Assay
- Western Blot (Recombinant protein)
- Antibody Production
- Protein Array

## Gene Info — KRT81

Entrez GeneID [3887](#)

GeneBank Accession# [BC021241](#)

Protein Accession# [AAH21241](#)

Gene Name KRT81

Gene Alias HB1, Hb-1, KRTHB1, MLN137, ghHkb1, hHAKB2-1

Gene Description keratin 81

Omim ID [158000 602153](#)

Gene Ontology [Hyperlink](#)

**Gene Summary**

The protein encoded by this gene is a member of the keratin gene family. As a type II hair keratin, it is a basic protein which heterodimerizes with type I keratins to form hair and nails. The type II hair keratins are clustered in a region of chromosome 12q13 and are grouped into two distinct subfamilies based on structure similarity. One subfamily, consisting of KRTHB1, KRTHB3, and KRTHB6, is highly related. The other less-related subfamily includes KRTHB2, KRTHB4, and KRTHB5. All hair keratins are expressed in the hair follicle; this hair keratin, as well as KRTHB3 and KRTHB6, is found primarily in the hair cortex. Mutations in this gene and KRTHB6 have been observed in patients with a rare dominant hair disease, monilethrix. [provided by RefSeq]

**Other Designations** hard keratin, type II, 1|keratin, hair, basic, 1