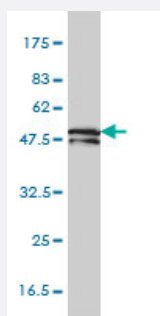


KRTHB1 monoclonal antibody (M01), clone 3B10-5B10

Catalog # H00003887-M01

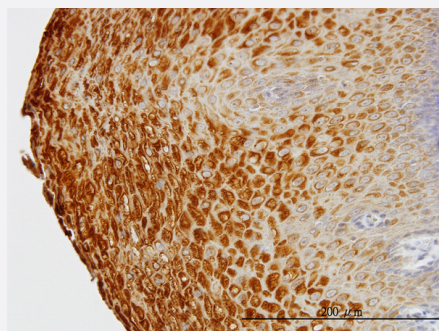
Size 100 ug

Applications



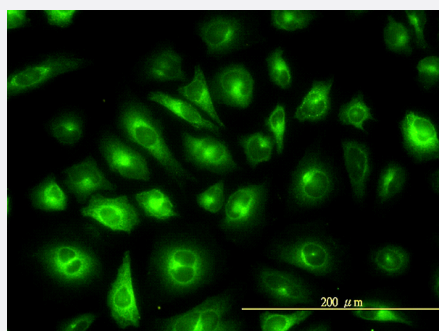
Western Blot (Cell lysate)

KRTHB1 monoclonal antibody (M01), clone 3B10-5B10 Western Blot analysis of KRTHB1 expression in HepG2 (Cat # L019V1).



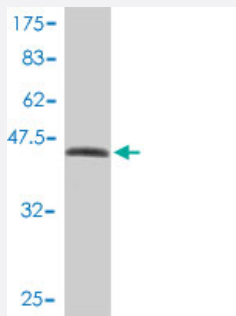
Immunohistochemistry (Formalin/PFA-fixed paraffin-embedded sections)

Immunoperoxidase of monoclonal antibody to KRTHB1 on formalin-fixed paraffin-embedded human esophagus. [antibody concentration 3 ug/ml]



Immunofluorescence

Immunofluorescence of monoclonal antibody to KRTHB1 on HeLa cell. [antibody concentration 10 ug/ml]



Western Blot detection against Immunogen (47.96 KDa) .

Specification

Product Description	Mouse monoclonal antibody raised against a full length recombinant KRTHB1.
Immunogen	KRTHB1 (AAH21241, 1 a.a. ~ 202 a.a) full-length recombinant protein with GST tag. MW of the GST tag alone is 26 KDa.
Sequence	MKATVIRHGETLRRTKEEINELNRMIRQLTAEVENAKCQNSKLEAAVAQSEQQGEAALSDARCKL AELEGALQKAKQDMACLIREYQEVMNSKLGLDIEIATYRRLLEGEEQRLCEGIGAVNVCVSSSRGG VVCGLDCVSGSRPVTGVSVCAPCNGNVAVSTGLCAPCGQLNTTCGGGSCGVGSCGISSLGVG SCGSSCRKC
Host	Mouse
Reactivity	Human
Isotype	IgG2b kappa
Quality Control Testing	Antibody Reactive Against Recombinant Protein. Western Blot detection against Immunogen (47.96 KDa) .
Storage Buffer	In 1x PBS, pH 7.4
Storage Instruction	Store at -20°C or lower. Aliquot to avoid repeated freezing and thawing.

Applications

- Western Blot (Cell lysate)

KRTHB1 monoclonal antibody (M01), clone 3B10-5B10 Western Blot analysis of KRTHB1 expression in HepG2 (Cat # L019V1).

[Protocol Download](#)

- Western Blot (Recombinant protein)

[Protocol Download](#)

- Immunohistochemistry (Formalin/PFA-fixed paraffin-embedded sections)

Immunoperoxidase of monoclonal antibody to KRTHB1 on formalin-fixed paraffin-embedded human esophagus. [antibody concentration 3 ug/ml]

[Protocol Download](#)

- ELISA

- Immunofluorescence

Immunofluorescence of monoclonal antibody to KRTHB1 on HeLa cell. [antibody concentration 10 ug/ml]

Gene Info — KRT81

Entrez GeneID [3887](#)

GeneBank Accession# [BC021241](#)

Protein Accession# [AAH21241](#)

Gene Name KRT81

Gene Alias HB1, Hb-1, KRTHB1, MLN137, ghHkb1, hHAKB2-1

Gene Description keratin 81

Omim ID [158000 602153](#)

Gene Ontology [Hyperlink](#)

Gene Summary The protein encoded by this gene is a member of the keratin gene family. As a type II hair keratin, it is a basic protein which heterodimerizes with type I keratins to form hair and nails. The type II hair keratins are clustered in a region of chromosome 12q13 and are grouped into two distinct subfamilies based on structure similarity. One subfamily, consisting of KRTHB1, KRTHB3, and KRTHB6, is highly related. The other less-related subfamily includes KRTHB2, KRTHB4, and KRTHB5. All hair keratins are expressed in the hair follicle; this hair keratin, as well as KRTHB3 and KRTHB6, is found primarily in the hair cortex. Mutations in this gene and KRTHB6 have been observed in patients with a rare dominant hair disease, monilethrix. [provided by RefSeq]

Other Designations hard keratin, type II, 1|keratin, hair, basic, 1