

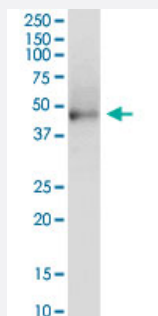
MaxPab®

KRT81 purified MaxPab rabbit polyclonal antibody (D01P)

Catalog # H00003887-D01P

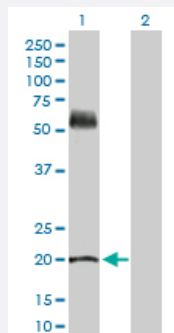
Size 100 ug

Applications



Western Blot (Tissue lysate)

KRT81 MaxPab rabbit polyclonal antibody. Western Blot analysis of KRT81 expression in human stomach.



Western Blot (Transfected lysate)

Western Blot analysis of KRT81 expression in transfected 293T cell line ([H00003887-T02](#)) by KRT81 MaxPab polyclonal antibody.

Lane 1: KRT81 transfected lysate(21.10 KDa).

Lane 2: Non-transfected lysate.

Specification

Product Description	Rabbit polyclonal antibody raised against a full-length human KRT81 protein.
Immunogen	KRT81 (AAH21241.1, 1 a.a. ~ 202 a.a) full-length human protein.
Sequence	MKATVIRHGETLRRTKEEINELNRMIRQLTAEVENAKCQNSKLEAAVAQSEQQGEAALSDARCKL AELEGALQKAKQDMACLIREYQEVMSKLGDLIEIATYRRLLEGEEQRLCEGIGAVNVCVSSSRGG VVCGLDCVSGSRPVTGVSVCAPCNGNVAVSTGLCAPCGQLNTTCGGGSCGVGSCGSSSLGVG SCGSSCRKC
Host	Rabbit
Reactivity	Human

Quality Control Testing	Antibody reactive against mammalian transfected lysate.
Storage Buffer	In 1x PBS, pH 7.4
Storage Instruction	Store at -20°C or lower. Aliquot to avoid repeated freezing and thawing.

Applications

- Western Blot (Tissue lysate)

KRT81 MaxPab rabbit polyclonal antibody. Western Blot analysis of KRT81 expression in human stomach.

[Protocol Download](#)

- Western Blot (Transfected lysate)

Western Blot analysis of KRT81 expression in transfected 293T cell line ([H00003887-T02](#)) by KRT81 MaxPab polyclonal antibody.

Lane 1: KRT81 transfected lysate(21.10 KDa).

Lane 2: Non-transfected lysate.

[Protocol Download](#)

Gene Info — KRT81

Entrez GeneID	3887
GeneBank Accession#	BC021241.2
Protein Accession#	AAH21241.1
Gene Name	KRT81
Gene Alias	HB1, Hb-1, KRTHB1, MLN137, ghHkb1, hHAKB2-1
Gene Description	keratin 81
Omim ID	158000 602153
Gene Ontology	Hyperlink

Gene Summary

The protein encoded by this gene is a member of the keratin gene family. As a type II hair keratin, it is a basic protein which heterodimerizes with type I keratins to form hair and nails. The type II hair keratins are clustered in a region of chromosome 12q13 and are grouped into two distinct subfamilies based on structure similarity. One subfamily, consisting of KRTHB1, KRTHB3, and KRTHB6, is highly related. The other less-related subfamily includes KRTHB2, KRTHB4, and KRTHB5. All hair keratins are expressed in the hair follicle; this hair keratin, as well as KRTHB3 and KRTHB6, is found primarily in the hair cortex. Mutations in this gene and KRTHB6 have been observed in patients with a rare dominant hair disease, monilethrix. [provided by RefSeq]

Other Designations

hard keratin, type II, 1|keratin, hair, basic, 1