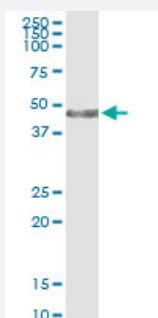


# KRT34 (Human) IP-WB Antibody Pair

Catalog # H00003885-PW1

Size 1 Set

## Applications



Immunoprecipitation of KRT34 transfected lysate using rabbit polyclonal anti-KRT34 and Protein A Magnetic Bead ([U0007](#)), and immunoblotted with mouse polyclonal anti-KRT34.

## Specification

<b>Product Description</b>	This IP-WB antibody pair set comes with one antibody for immunoprecipitation and another to detect the precipitated protein in western blot.
<b>Reactivity</b>	Human
<b>Quality Control Testing</b>	Immunoprecipitation-Western Blot (IP-WB) Immunoprecipitation of KRT34 transfected lysate using rabbit polyclonal anti-KRT34 and Protein A Magnetic Bead ( <a href="#">U0007</a> ), and immunoblotted with mouse polyclonal anti-KRT34.
<b>Supplied Product</b>	Antibody pair set content: 1. Antibody pair for IP: rabbit polyclonal anti-KRT34 (300 ul) 2. Antibody pair for WB: mouse polyclonal anti-KRT34 (50 ul)
<b>Storage Instruction</b>	Store reagents of the antibody pair set at -20°C or lower. Please aliquot to avoid repeated freeze thaw cycle. Reagents should be returned to -20°C storage immediately after use.

## Applications

- Immunoprecipitation-Western Blot

[Protocol Download](#)

## Gene Info — KRT34

Entrez GeneID	<a href="#">3885</a>
Gene Name	KRT34
Gene Alias	HA4, Ha-4, KRTHA4, hHa4
Gene Description	keratin 34
Omim ID	<a href="#">602763</a>
Gene Ontology	<a href="#">Hyperlink</a>
Gene Summary	<p>The protein encoded by this gene is a member of the keratin gene family. As a type I hair keratin, it is an acidic protein which heterodimerizes with type II keratins to form hair and nails. The type I hair keratins are clustered in a region of chromosome 17q12-q21 and have the same direction of transcription. [provided by RefSeq]</p>
Other Designations	hard keratin, type I, 4 keratin, hair, acidic, 4