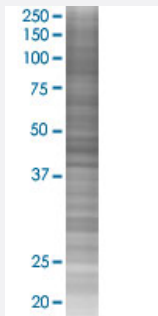


# KRTHA2 293T Cell Transient Overexpression Lysate(Denatured)

Catalog # H00003882-T02

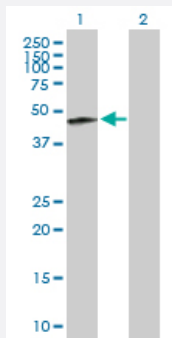
Size 100 uL

## Applications



### SDS-PAGE Gel

KRT32 transfected lysate.



### Western Blot

Lane 1: KRT32 transfected lysate ( 49.28 KDa)

Lane 2: Non-transfected lysate.

## Specification

**Transfected Cell Line** 293T

**Plasmid** pCMV-KRTHA2 full-length

**Host** Human

**Theoretical MW (kDa)** 49.28

**Quality Control Testing** Transient overexpression cell lysate was tested with Anti-KRTHA2 antibody ([H00003882-B01P](#)) by Western Blots.

SDS-PAGE Gel  
KRT32 transfected lysate.

Western Blot  
Lane 1: KRT32 transfected lysate ( 49.28 KDa)  
Lane 2: Non-transfected lysate.

**Storage Buffer**

1X Sample Buffer (50 mM Tris-HCl, 2% SDS, 10% glycerol, 300 mM 2-mercaptoethanol, 0.01% Bromophenol blue)

**Storage Instruction**

Store at -80°C. Aliquot to avoid repeated freezing and thawing.

## Applications

- Western Blot

## Gene Info — KRT32

**Entrez GeneID**[3882](#)**GeneBank Accession#**[BC148740](#)**Protein Accession#**[AA48741.1](#)**Gene Name**

KRT32

**Gene Alias**

HA2, HKA2, KRTHA2, hHa2

**Gene Description**

keratin 32

**Omim ID**[602760](#)**Gene Ontology**[Hyperlink](#)**Gene Summary**

The protein encoded by this gene is a member of the keratin gene family. As a type I hair keratin, it is an acidic protein which heterodimerizes with type II keratins to form hair and nails. The type I hair keratins are clustered in a region of chromosome 17q12-q21 and have the same direction of transcription. [provided by RefSeq]

**Other Designations**

hair type I acidic keratin|hard keratin, type I, 2|keratin, hair, acidic, 2|type I cuticular hair keratin