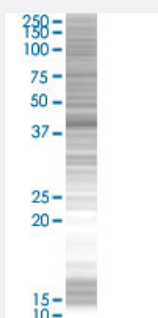


# KRT19 293T Cell Transient Overexpression Lysate(Denatured)

Catalog # H00003880-T02

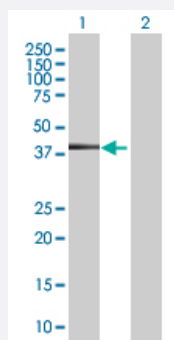
Size 100 uL

## Applications



### SDS-PAGE Gel

KRT19 transfected lysate.



### Western Blot

Lane 1: KRT19 transfected lysate ( 44.11 KDa)

Lane 2: Non-transfected lysate.

## Specification

**Transfected Cell Line** 293T

**Plasmid** pCMV-KRT19 full-length

**Host** Human

**Theoretical MW (kDa)** 44.11

**Quality Control Testing** Transient overexpression cell lysate was tested with Anti-KRT19 antibody ([H00003880-B02](#)) by Western Blots.  
SDS-PAGE Gel  
KRT19 transfected lysate.  
Western Blot  
Lane 1: KRT19 transfected lysate ( 44.11 KDa)  
Lane 2: Non-transfected lysate.

**Storage Buffer**

1X Sample Buffer (50 mM Tris-HCl, 2% SDS, 10% glycerol, 300 mM 2-mercaptoethanol, 0.01% Bromophenol blue)

**Storage Instruction**

Store at -80°C. Aliquot to avoid repeated freezing and thawing.

## Applications

- Western Blot

## Gene Info — KRT19

**Entrez GeneID**[3880](#)**GeneBank Accession#**[BC007628.1](#)**Protein Accession#**[-](#)**Gene Name**

KRT19

**Gene Alias**

CK19, K19, K1CS, MGC15366

**Gene Description**

keratin 19

**Omim ID**[148020](#)**Gene Ontology**[Hyperlink](#)**Gene Summary**

The protein encoded by this gene is a member of the keratin family. The keratins are intermediate filament proteins responsible for the structural integrity of epithelial cells and are subdivided into cytokeratins and hair keratins. The type I cytokeratins consist of acidic proteins which are arranged in pairs of heterotypic keratin chains. Unlike its related family members, this smallest known acidic cytokeratin is not paired with a basic cytokeratin in epithelial cells. It is specifically expressed in the periderm, the transiently superficial layer that envelopes the developing epidermis. The type I cytokeratins are clustered in a region of chromosome 17q12-q21. [provided by RefSeq]

**Other Designations**

40-kDa keratin intermediate filament|cytokeratin 19|keratin, type I cytoskeletal 19|keratin, type I, 40-kd

## Disease

- [Liver Cirrhosis](#)