

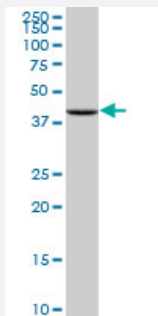
MaxPab®

KRT19 purified MaxPab mouse polyclonal antibody (B02P)

Catalog # H00003880-B02P

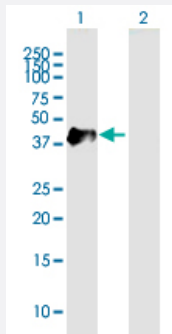
Size 50 ug

Applications



Western Blot (Tissue lysate)

KRT19 MaxPab polyclonal antibody. Western Blot analysis of KRT19 expression in human placenta.

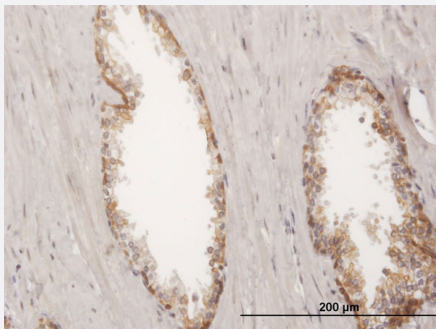


Western Blot (Transfected lysate)

Western Blot analysis of KRT19 expression in transfected 293T cell line ([H00003880-T02](#)) by KRT19 MaxPab polyclonal antibody.

Lane 1: KRT19 transfected lysate(44 KDa).

Lane 2: Non-transfected lysate.



Immunohistochemistry (Formalin/PFA-fixed paraffin-embedded sections)

Immunoperoxidase of purified MaxPab antibody to KRT19 on formalin-fixed paraffin-embedded human prostate. [antibody concentration 3 ug/ml]

Specification

Product Description

Mouse polyclonal antibody raised against a full-length human KRT19 protein.

Immunogen	KRT19 (AAH07628.1, 1 a.a. ~ 400 a.a) full-length human protein.
Sequence	MTSYSYRQSSATSSFGGLGGGSVRFPGVAFRAPSIHGGSGGRGVSVSSARFVSSSSSGGYGG GYGGVLTASDGLLAGNEKLTMQNLNDRLASYLDKVRALAAANGELEVKIRDWYQKQGPGPSRDY SHYYTTIQDLRDKILGATIENSRVLQIDNARLAADDFRTKFETEALRMSVEADINGLRRVLDELTLA RTDLEMQIEGLKEELAYLKKNHEEEISTLRGQVGGQVSVEVDSAPGTDLAKILSDMRSQYEVMAE QNRKDAEAWFTSRTEELNREVAGHTEQLQMSRSEVTDLRRTLQGLEIELQSQLSMKAALEDTLA ETEARFGAQLAHIQALISGIEAQLGDVRADSERQNQEYQRLMDIKSRLEQEIATYRSLLLEGQEDHYN NLSASKVL
Host	Mouse
Reactivity	Human
Quality Control Testing	Antibody reactive against mammalian transfected lysate.
Storage Buffer	In 1x PBS, pH 7.4
Storage Instruction	Store at -20°C or lower. Aliquot to avoid repeated freezing and thawing.

Applications

- Western Blot (Tissue lysate)

KRT19 MaxPab polyclonal antibody. Western Blot analysis of KRT19 expression in human placenta.

[Protocol Download](#)

- Western Blot (Transfected lysate)

Western Blot analysis of KRT19 expression in transfected 293T cell line ([H00003880-T02](#)) by KRT19 MaxPab polyclonal antibody.

Lane 1: KRT19 transfected lysate(44 KDa).

Lane 2: Non-transfected lysate.

[Protocol Download](#)

- Immunohistochemistry (Formalin/PFA-fixed paraffin-embedded sections)

Immunoperoxidase of purified MaxPab antibody to KRT19 on formalin-fixed paraffin-embedded human prostate. [antibody concentration 3 ug/ml]

[Protocol Download](#)

Gene Info — KRT19

Entrez GeneID

[3880](#)

GeneBank Accession#	BC007628.1
Protein Accession#	AAH07628.1
Gene Name	KRT19
Gene Alias	CK19, K19, K1CS, MGC15366
Gene Description	keratin 19
Omim ID	148020
Gene Ontology	Hyperlink
Gene Summary	<p>The protein encoded by this gene is a member of the keratin family. The keratins are intermediate filament proteins responsible for the structural integrity of epithelial cells and are subdivided into cytokeratins and hair keratins. The type I cytokeratins consist of acidic proteins which are arranged in pairs of heterotypic keratin chains. Unlike its related family members, this smallest known acidic cytokeratin is not paired with a basic cytokeratin in epithelial cells. It is specifically expressed in the periderm, the transiently superficial layer that envelopes the developing epidermis. The type I cytokeratins are clustered in a region of chromosome 17q12-q21. [provided by RefSeq]</p>
Other Designations	40-kDa keratin intermediate filament cytokeratin 19 keratin, type I cytoskeletal 19 keratin, type I, 40-kd

Disease

- [Liver Cirrhosis](#)