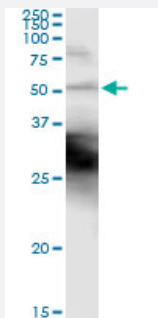


# KRT18 (Human) IP-WB Antibody Pair

Catalog # H00003875-PW1

Size 1 Set

## Applications



Immunoprecipitation of KRT18 transfected lysate using mouse monoclonal anti-KRT18 and Protein A Magnetic Bead ([U0007](#)), and immunoblotted with rabbit polyclonal anti-KRT18.

## Specification

<b>Product Description</b>	This IP-WB antibody pair set comes with one antibody for immunoprecipitation and another to detect the precipitated protein in western blot.
<b>Reactivity</b>	Human
<b>Interspecies Antigen Sequence</b>	Mouse (89%); Rat (84%)
<b>Quality Control Testing</b>	Immunoprecipitation-Western Blot (IP-WB) Immunoprecipitation of KRT18 transfected lysate using mouse monoclonal anti-KRT18 and Protein A Magnetic Bead ( <a href="#">U0007</a> ), and immunoblotted with rabbit polyclonal anti-KRT18.
<b>Supplied Product</b>	Antibody pair set content: 1. Antibody pair for IP: mouse monoclonal anti-KRT18 (300 ug) 2. Antibody pair for WB: rabbit polyclonal anti-KRT18 (50 ul)
<b>Storage Instruction</b>	Store reagents of the antibody pair set at -20°C or lower. Please aliquot to avoid repeated freeze thaw cycle. Reagents should be returned to -20°C storage immediately after use.

## Applications

- Immunoprecipitation-Western Blot

[Protocol Download](#)

## Gene Info — KRT18

Entrez GeneID	<a href="#">3875</a>
Gene Name	KRT18
Gene Alias	CYK18, K18
Gene Description	keratin 18
Omim ID	<a href="#">148070 215600</a>
Gene Ontology	<a href="#">Hyperlink</a>
Gene Summary	KRT18 encodes the type I intermediate filament chain keratin 18. Keratin 18, together with its filament partner keratin 8, are perhaps the most commonly found members of the intermediate filament gene family. They are expressed in single layer epithelial tissues of the body. Mutations in this gene have been linked to cryptogenic cirrhosis. Two transcript variants encoding the same protein have been found for this gene. [provided by RefSeq]
Other Designations	cell proliferation-inducing protein 46 cytokeratin 18

## Pathway

- [Pathogenic Escherichia coli infection - EHEC](#)

## Disease

- [Cleft Lip](#)
- [Cleft Palate](#)
- [Drug-Induced Liver Injury](#)
- [Genetic Predisposition to Disease](#)
- [Liver Cirrhosis](#)
- [Liver Failure](#)