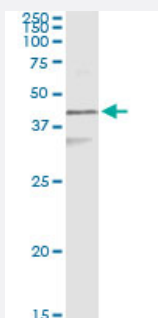


# KRT17 (Human) IP-WB Antibody Pair

Catalog # H00003872-PW1

Size 1 Set

## Applications



Immunoprecipitation of KRT17 transfected lysate using mouse monoclonal anti-KRT17 and Protein A Magnetic Bead ([U0007](#)), and immunoblotted with rabbit polyclonal anti-KRT17.

## Specification

<b>Product Description</b>	This IP-WB antibody pair set comes with one antibody for immunoprecipitation and another to detect the precipitated protein in western blot.
<b>Reactivity</b>	Human
<b>Quality Control Testing</b>	Immunoprecipitation-Western Blot (IP-WB) Immunoprecipitation of KRT17 transfected lysate using mouse monoclonal anti-KRT17 and Protein A Magnetic Bead ( <a href="#">U0007</a> ), and immunoblotted with rabbit polyclonal anti-KRT17.
<b>Supplied Product</b>	Antibody pair set content: 1. Antibody pair for IP: mouse monoclonal anti-KRT17 (300 ug) 2. Antibody pair for WB: rabbit polyclonal anti-KRT17 (50 ul)
<b>Storage Instruction</b>	Store reagents of the antibody pair set at -20°C or lower. Please aliquot to avoid repeated freeze thaw cycle. Reagents should be returned to -20°C storage immediately after use.

## Applications

- Immunoprecipitation-Western Blot

[Protocol Download](#)

## Gene Info — KRT17

Entrez GeneID	<a href="#">3872</a>
Gene Name	KRT17
Gene Alias	K17, PC, PC2, PCHC1
Gene Description	keratin 17
Omim ID	<a href="#">148069</a> <a href="#">167210</a> <a href="#">184500</a>
Gene Ontology	<a href="#">Hyperlink</a>
Gene Summary	This gene encodes the type I intermediate filament chain keratin 17, expressed in nail bed, hair follicle, sebaceous glands, and other epidermal appendages. Mutations in this gene lead to Jackson-Lawler type pachyonychia congenita and steatocystoma multiplex. [provided by RefSeq]
Other Designations	cytokeratin-17