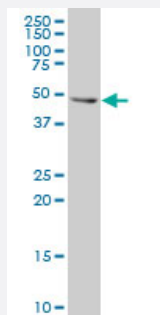


KRT16 polyclonal antibody (A01)

Catalog # H00003868-A01

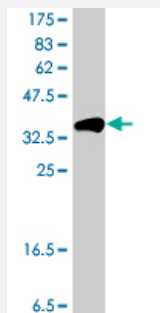
Size 50 uL

Applications



Western Blot (Cell lysate)

KRT16 polyclonal antibody (A01), Lot # 060118JC01 Western Blot analysis of KRT16 expression in 293 (Cat # L026V1).



Western Blot detection against Immunogen (36.89 KDa) .

Specification

Product Description	Mouse polyclonal antibody raised against a partial recombinant KRT16.
Immunogen	KRT16 (NP_005548, 301 a.a. ~ 398 a.a) partial recombinant protein with GST tag.
Sequence	RRDAETWFLSKTEELNKEVASNSELVQSSRSEVTELRRVLQGLEIELQSQLSMKASLENSLEETK GRYCMQLSQQGLIGSVEEQLAQLRCEMEQQSQ
Host	Mouse
Reactivity	Human
Quality Control Testing	Antibody Reactive Against Recombinant Protein. Western Blot detection against Immunogen (36.89 KDa) .

Storage Buffer 50 % glycerol

Storage Instruction Store at -20°C or lower. Aliquot to avoid repeated freezing and thawing.

Applications

- Western Blot (Cell lysate)

KRT16 polyclonal antibody (A01), Lot # 060118JC01 Western Blot analysis of KRT16 expression in 293 (Cat # L026V1).

[Protocol Download](#)

- Western Blot (Recombinant protein)

[Protocol Download](#)

- ELISA

Gene Info — KRT16

Entrez GeneID [3868](#)

GeneBank Accession# [NM_005557](#)

Protein Accession# [NP_005548](#)

Gene Name KRT16

Gene Alias CK16, K16, K1CP, KRT16A, NEPPK

Gene Description keratin 16

Omim ID [144200](#) [148067](#) [167200](#) [600962](#)

Gene Ontology [Hyperlink](#)

Gene Summary The protein encoded by this gene is a member of the keratin gene family. The keratins are intermediate filament proteins responsible for the structural integrity of epithelial cells and are subdivided into cytokeratins and hair keratins. Most of the type I cytokeratins consist of acidic proteins which are arranged in pairs of heterotypic keratin chains and are clustered in a region of chromosome 17q12-q21. This keratin has been coexpressed with keratin 14 in a number of epithelial tissues, including esophagus, tongue, and hair follicles. Mutations in this gene are associated with type 1 pachyonychia congenita, non-epidermolytic palmoplantar keratoderma and unilateral palmoplantar verrucous nevus. [provided by RefSeq]

Other Designations cytokeratin 16|focal non-epidermolytic palmoplantar keratoderma|keratin, type I cytoskeletal 16