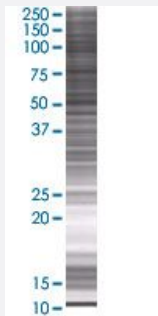


KRT15 293T Cell Transient Overexpression Lysate(Denatured)

Catalog # H00003866-T01

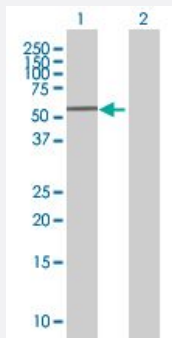
Size 100 uL

Applications



SDS-PAGE Gel

KRT15 transfected lysate.



Western Blot

Lane 1: KRT15 transfected lysate (50.27 KDa)

Lane 2: Non-transfected lysate.

Specification

Transfected Cell Line 293T

Plasmid pCMV-KRT15 full-length

Host Human

Theoretical MW (kDa) 50.27

Quality Control Testing Transient overexpression cell lysate was tested with Anti-KRT15 antibody ([H00003866-B01](#)) by Western Blots.
SDS-PAGE Gel
KRT15 transfected lysate.
Western Blot
Lane 1: KRT15 transfected lysate (50.27 KDa)
Lane 2: Non-transfected lysate.

Storage Buffer

1X Sample Buffer (50 mM Tris-HCl, 2% SDS, 10% glycerol, 300 mM 2-mercaptoethanol, 0.01% Bromophenol blue)

Storage Instruction

Store at -80°C. Aliquot to avoid repeated freezing and thawing.

Applications

- Western Blot

Gene Info — KRT15

Entrez GeneID[3866](#)**GeneBank Accession#**[NM_002275.2](#)**Protein Accession#**[NP_002266.2](#)**Gene Name**

KRT15

Gene Alias

CK15, K15, K1CO

Gene Description

keratin 15

Omim ID[148030](#)**Gene Ontology**[Hyperlink](#)**Gene Summary**

The protein encoded by this gene is a member of the keratin gene family. The keratins are intermediate filament proteins responsible for the structural integrity of epithelial cells and are subdivided into cytokeratins and hair keratins. Most of the type I cytokeratins consist of acidic proteins which are arranged in pairs of heterotypic keratin chains and are clustered in a region on chromosome 17q21.2. [provided by RefSeq]

Other Designations

OTTHUMP00000165060|cytokeratin 15|keratin-15, basic|keratin-15, beta|type I cytoskeletal 15