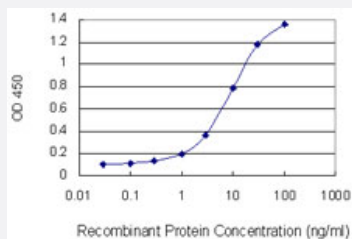


# KRT10 monoclonal antibody (M01), clone 1H6

Catalog # H00003858-M01

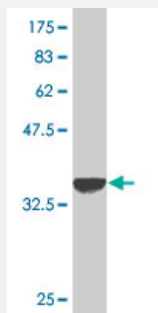
Size 100 ug

## Applications



### Sandwich ELISA (Recombinant protein)

Detection limit for recombinant GST tagged KRT10 is 0.3 ng/ml as a capture antibody.



Western Blot detection against Immunogen (37.84 KDa) .

## Specification

Product Description	Mouse monoclonal antibody raised against a partial recombinant KRT10.
Immunogen	KRT10 (NP_000412, 345 a.a. ~ 454 a.a) partial recombinant protein with GST tag. MW of the GST tag alone is 26 KDa.
Sequence	KELTTEIDNNIEQISSYKSEITELRRNVQALEIELQSQLALKQSLEASLAETEGRYCVQLSQIQAQISA LEEQLQQIRAEETECQNTHEYQQLLDIKIRLENEIQTYSLL
Host	Mouse
Reactivity	Human
Isotype	IgG2b Kappa

**Quality Control Testing**

Antibody Reactive Against Recombinant Protein.  
Western Blot detection against Immunogen (37.84 KDa) .

**Storage Buffer**

In 1x PBS, pH 7.4

**Storage Instruction**

Store at -20°C or lower. Aliquot to avoid repeated freezing and thawing.

## Applications

- Western Blot (Recombinant protein)

[Protocol Download](#)

- Sandwich ELISA (Recombinant protein)

Detection limit for recombinant GST tagged KRT10 is 0.3 ng/ml as a capture antibody.

[Protocol Download](#)

- ELISA

## Gene Info — KRT10

**Entrez GeneID**

[3858](#)

**GeneBank Accession#**

[NM\\_000421](#)

**Protein Accession#**

[NP\\_000412](#)

**Gene Name**

KRT10

**Gene Alias**

CK10, K10, KPP

**Gene Description**

keratin 10

**Omim ID**

[113800](#) [148080](#) [600648](#) [607602](#)

**Gene Ontology**

[Hyperlink](#)

**Gene Summary**

This gene encodes a member of the type I (acidic) cytokeratin family, which belongs to the superfamily of intermediate filament (IF) proteins. Keratins are heteropolymeric structural proteins which form the intermediate filament. These filaments, along with actin microfilaments and microtubules, compose the cytoskeleton of epithelial cells. Mutations in this gene are associated with epidermolytic hyperkeratosis. This gene is located within a cluster of keratin family members on chromosome 17q21. [provided by RefSeq]

**Other Designations**cytokeratin 10

---