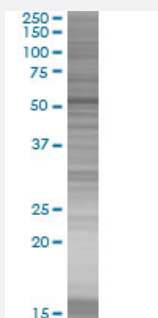


KRT4 293T Cell Transient Overexpression Lysate(Denatured)

Catalog # H00003851-T01

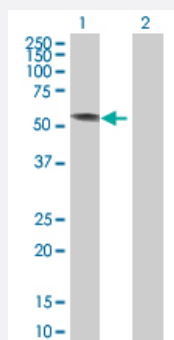
Size 100 uL

Applications



SDS-PAGE Gel

KRT4 transfected lysate.



Western Blot

Lane 1: KRT4 transfected lysate (58.85 KDa)

Lane 2: Non-transfected lysate.

Specification

Transfected Cell Line	293T
Plasmid	pCMV-KRT4 full-length
Host	Human
Theoretical MW (kDa)	58.85
Interspecies Antigen Sequence	Mouse (83)

Quality Control Testing

Transient overexpression cell lysate was tested with Anti-KRT4 antibody ([H00003851-B01](#)) by Western Blots.
 SDS-PAGE Gel
 KRT4 transfected lysate.
 Western Blot
 Lane 1: KRT4 transfected lysate (58.85 KDa)
 Lane 2: Non-transfected lysate.

Storage Buffer

1X Sample Buffer (50 mM Tris-HCl, 2% SDS, 10% glycerol, 300 mM 2-mercaptoethanol, 0.01% Bromophenol blue)

Storage Instruction

Store at -80°C. Aliquot to avoid repeated freezing and thawing.

Applications

- Western Blot

Gene Info — KRT4

Entrez GeneID

[3851](#)

GeneBank Accession#

[BC042174.1](#)

Protein Accession#

-

Gene Name

KRT4

Gene Alias

CK4, CYK4, FLJ31692, K4

Gene Description

keratin 4

Omim ID

[123940 193900](#)

Gene Ontology

[Hyperlink](#)

Gene Summary

The protein encoded by this gene is a member of the keratin gene family. The type II cytokeratins consist of basic or neutral proteins which are arranged in pairs of heterotypic keratin chains coexpressed during differentiation of simple and stratified epithelial tissues. This type II cytokeratin is specifically expressed in differentiated layers of the mucosal and esophageal epithelia with family member KRT13. Mutations in these genes have been associated with White Sponge Nevus, characterized by oral, esophageal, and anal leukoplakia. The type II cytokeratins are clustered in a region of chromosome 12q12-q13. [provided by RefSeq]

Other Designations

cytokeratin 4|keratin, type II cytoskeletal 4